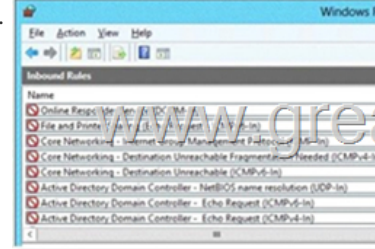
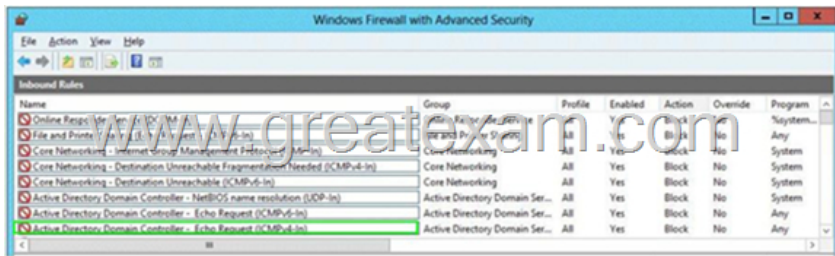


## Free Greatexam Microsoft 70-410 PDF Dumps With The Latest Update Exam Questions(241-250)

How to 100% pass 70-410 exam? Greatexam provides the guaranteed 70-410 exam preparation material to boost up your confidence in 70-410 exam. Successful candidates have provided their reviews about our 70-410 dumps. Now Greatexam supplying the new version of 70-410 VCE and PDF dumps. We ensure our 70-410 exam questions are the most complete and authoritative compared with others', which will ensure your 70-410 exam pass. QUESTION 241 You run a Windows 2012 R2 Hyper-V Role Server, you need to shrink the size of files.vhd. Which powershellcmdlet option you should run first? A. Dismount-VHD B. Mount-VHD C. Resize-VHD D. Convert-VHD Answer: D QUESTION 242 You only want to share a printer with Group1, administrators, central owner and operators. (pick 2 answers) A. Add permissions to Group1 B. Remove permissions from administrators C. Add permissions to operators D. Add permissions to Central Owner E. Remove permissions from everyone. Answer: AE QUESTION 243 A laptop with server 2012 R2 OS, you need to ensure that server 2012 R2 can use wireless network adapter. What should you do first? A. use server manager to install the Wireless Lan Service Role B. use server manager to install the Wireless Network Role C. use server manager to install the Wireless Lan Service Feature D. use server manager to install the Wireless Network Feature Answer: C QUESTION 244 Hotspot Question Your network contains a domain controller named dc5.adatum.com that runs Windows Server 2012 R2. You discover that you can connect successfully to DC5 over the network, but you receive a request timed out message when you attempt to ping DC5. You need to configure DC5 to respond to ping request. Which firewall rule should you modify on DC5? To answer, select the appropriate rule in the answer area.

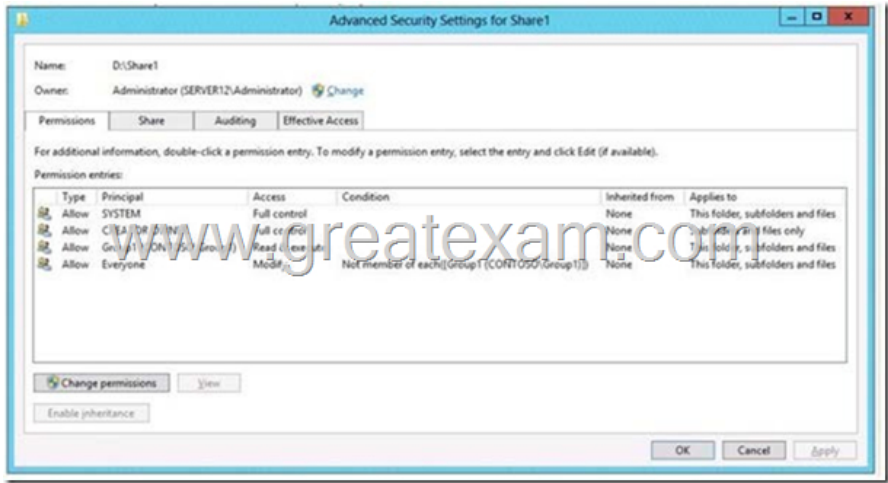


Answer:

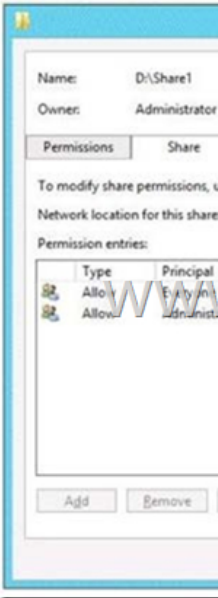


QUESTION 245 Your network contains an Active Directory domain named contoso.com. The domain contains a server named Server1. Server1 runs Windows Server 2012 R2 and has the HyperV server role installed. You need to log the amount of system resources used by each virtual machine. What should you do? A. From Windows PowerShell, run the Enable-VMResourceMetering cmdlet. B. From Windows System Resource Manager, enable Accounting. C. From Windows System Resource Manager, add a resource allocation policy. D. From Windows PowerShell, run the Measure-VM cmdlet. Answer: A Explanation: Enable-VMResourceMetering - The Enable-VMResourceMetering cmdlet starts collecting resource utilization data for a virtual machine or resource pool. [http://technet.microsoft.com/en-us/library/hh848481\(v=ws.620\).aspx](http://technet.microsoft.com/en-us/library/hh848481(v=ws.620).aspx) Measure-VM - The Measure-VM cmdlet reports data on processor usage, memory usage, network traffic, and disk capacity for one or more virtual machines. [http://technet.microsoft.com/en-us/library/hh848471\(v=ws.620\).aspx](http://technet.microsoft.com/en-us/library/hh848471(v=ws.620).aspx) QUESTION 246 You work as an administrator at ABC.com. The ABC.com network consists of a single domain named ABC.com. All servers in the ABC.com domain, including domain controllers, have Windows Server 2012 R2 installed. ABC.com's user accounts are located in an organizational unit (OU), named ABCStaff. ABC.com's managers belong to a group, named ABCManagers. You have been instructed to create a new Group Policy object (GPO) that should be linked to the ABCStaffOU, but not affect ABC.com's managers. Which of the following actions should you take? A. You should consider removing the user accounts of the managers from the ABCStaff OU. B. You should consider configuring the new GPO's WMI filter. C. You should consider adding the user accounts of ABC.com's managers to the Admins group. D. You should consider adding the user accounts of ABC.com's managers to the local Administrators group. Answer: A QUESTION 247 You have two servers named Server1 and Server2 that run Windows Server

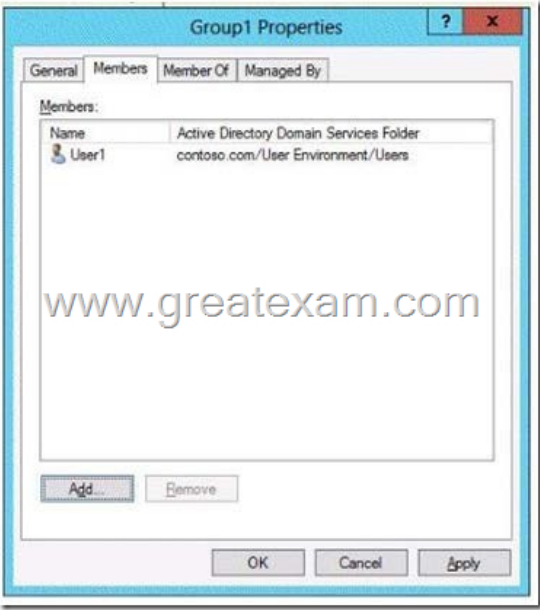
2012 R2. Server1 and Server2 are part of a workgroup. On Server1, you add Server2 to Server Manager. When you attempt to connect to Server2 from Server Manager, you receive the following error message: "Credentials not valid." You need to ensure that you can manage Server2 from Server1 by using Server Manager on Server1. What should you do? A. On Server 2, run the Configure-SmRemotingcmdlet. B. On Server 1, run the Set-NetFirewallRulecmdlet. C. On Server 1, run the Set-Item cmdlet. D. On Server 2, install the Remote Server Administration Tools (RSAT). Answer: A QUESTION 248 Hotspot Question You have a shared folder named Share1. The folder permissions of Share1 are configured as shown in the Folder Permissions exhibit. (Click the Exhibit button.)



The Share permissions of Share1 are configured as shown in the Share Permissions exhibit. (Click the Exhibit button.)



You have a group named Group1. The members of Group1 are shown in the Group1 exhibit. (Click the Exhibit button.)



Select Yes if the statement can be shown to be true based on the available information; otherwise select No. Each correct selection is worth one point.

	Yes	No
CONTOSO\User1 will be able to delete the files in Share1.	<input type="radio"/>	<input type="radio"/>
CONTOSO\User2 will be able to delete the files in Share1.	<input type="radio"/>	<input type="radio"/>
CONTOSO\Administrator will be able to delete the files in Share1.	<input type="radio"/>	<input type="radio"/>

Answer:

	Yes	No
CONTOSO\User1 will be able to delete the files in Share1.	<input type="radio"/>	<input checked="" type="checkbox"/>
CONTOSO\User2 will be able to delete the files in Share1.	<input checked="" type="checkbox"/>	<input type="radio"/>
CONTOSO\Administrator will be able to delete the files in Share1.	<input checked="" type="checkbox"/>	<input type="radio"/>

QUESTION 249 You have a server named Server1 that runs a Server Core installation of Windows Server 2012 R2 Standard. You establish a Remote Desktop session to Server1. You need to identify which task can be performed on Server1 from within the Remote Desktop session. What should you identify? A. Modify the network settings by using Sconfig. B. Join a domain by using the System Properties. C. Disable services by using Msconfig. D. Install a feature by using Server Manger. Answer: A Explanation: In Windows Server 2012 R2, you can use the Server Configuration tool (Sconfig.cmd) to configure and manage several common aspects of Server Core installations. You must be a member of the Administrators group to use the tool. Sconfig.cmd is available in the Minimal Server Interface and in Server with a GUI mode. QUESTION 250 You work as a senior administrator at

Lead2pass.com. The Lead2pass.com network consists of a single domain named Lead2pass.com. All servers on the Lead2pass.com network have Windows Server 2012 R2 installed. You are running a training exercise for junior administrators. You are currently discussing storage pools. Which of the following are TRUE with regards to storage pools? A. It allows you to group physical disks into one or more containers. B. It prevents you from grouping physical disks into one or more containers. C. It allows you to easily add storage with minor impact on users. D. It allows you to easily add storage without impacting users. Answer: AD If you want to prepare for 70-410 exam in shortest time, with minimum effort but for most effective result, you can use Greatexam 70-410 Practice Test which simulates the actual testing environment and allows you to focus on various sections of 70-410 Exam. Our candidates walk into the testing room as confident as a Certification Administrator. So you can pass the exam without any question. <http://www.greatexam.com/70-410-exam-questions.html>