

Easily Pass 70-410 Exam With Greatexam New Microsoft 70-410 Brain Dumps(281-290)

How to 100% pass 70-410 exam? Greatexam offers you all the 70-410 questions and answers which are the same as your real test with 100% correct and coverage rate. Our 70-410 practice tests are unparalleled in quality and are 100% guaranteed to make you pass 70-410 exam. All the 70-410 prepare material are the latest. Here are some free share of Microsoft 70-410 dumps. QUESTION 281Your network contains an Active Directory forest named contoso.com. The forest contains a single domain. All servers runs Windows Server 2012 R2.The domain contains two domain controllers named DC1 and DC2. Both domain controllers are virtual machines on a HyperV host. You plan to create a cloned domain controller named DC3 from an image of DC1. You need to ensure that you can clone DC1.Which two actions should you perform? (Each correct answer presents part of the solution.Choose two.) A.

Add the computer account of DC1 to the Cloneable Domain Controllers group.B. Create a DCCloneConfig.xml file on DC1.C. Add the computer account of DC3 to the Cloneable Domain Controllers group.D. Run the Enable-AdOptionalFeaturecmdlet.E. Modify the contents of the DefaultDCCloneAllowList.xml file on DC1. Answer: AB QUESTION 282Your network contains an Active Directory forest. The forest contains two domains named contoso.com and corp.contoso.com. All domain controllers run Windows Server 2012 R2 and are configured as global catalog servers. The corp.contoso.com domain contains a domain controller named DC1. You need to disable the global catalog on DC1. What should you do? A. From Active Directory Users and Computers, modify the properties of the DC1 computer account.B. From Active Directory Administrative Center, modify the properties of the DC1 computer account.C. From Active Directory Sites and Services, modify the NTDS Settings of the DC1 server object.D. From Active Directory Domains and Trusts, modify the properties of the corp.contoso.com domain. Answer: C QUESTION 283Your network contains an Active Directory domain named contoso.com. Your company hires 500 temporary employees for the summer. The human resources department gives you a Microsoft Excel document that contains a list of the temporary employees. You need to automate the creation of user accounts for the 500 temporary employees. Which tool or tools should you use? A. The Set-ADUsercmdlet and the Add-Member cmdletB. The Import-CSV cmdlet and the New-ADUsercmdletC. ADSI EditD. Active Directory Users and Computers Answer: BExplanation:

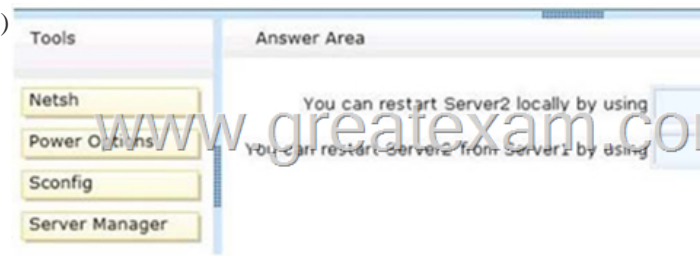
<http://technet.microsoft.com/en-us/library/ee176874.aspx>The CSVDE is a command-line utility that can create new AD DS objects by importing information from a comma-separated value (.csv) file. This would be the least amount of administrative effort in this case especially considering that these would be temporary employees. QUESTION 284Hotspot QuestionYou deploy a Server with a GUI installation of Windows Server 2012 R2 Datacenter. From Windows PowerShell, you run the following command: Remove-WindowsFeature ServerGui-Shell. In the table below, identify which tools are available on Server1 and which tools are unavailable on Server1. Make only one selection in each row. Each correct selection is worth one point.

Tool
File Explorer
Internet Explorer 10
Microsoft Management Console (MMC)
Server Manager

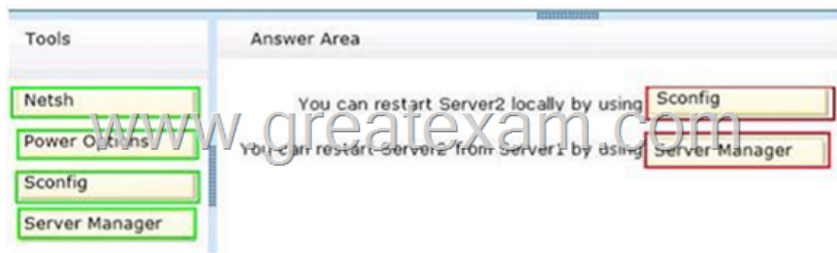
Answer:

Tool	Available	Unavailable
File Explorer	<input type="radio"/>	<input checked="" type="checkbox"/>
Internet Explorer 10	<input type="radio"/>	<input checked="" type="checkbox"/>
Microsoft Management Console (MMC)	<input checked="" type="checkbox"/>	<input type="radio"/>
Server Manager	<input checked="" type="checkbox"/>	<input type="radio"/>

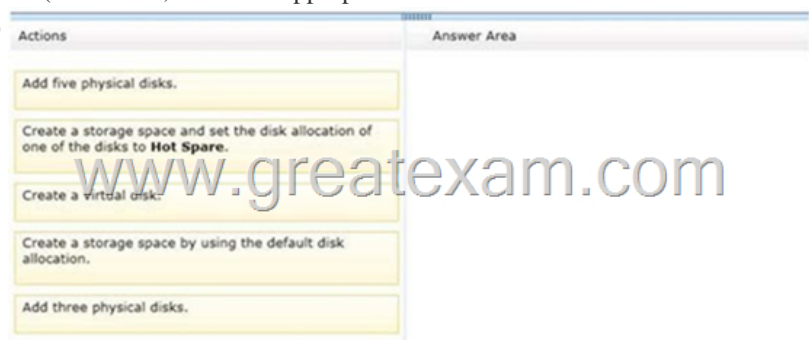
QUESTION 285 Drag and Drop Question Your network contains an Active Directory domain named contoso.com. The domain contains two servers named Server1 and Server2. Server1 and Server2 run a Server with a GUI installation of Windows Server 2012 R2. You remove the Graphical Management Tools and Infrastructure feature on Server2. You need to restart Server2. What should you do? (To answer, drag the appropriate tools to the correct statements. Each tool may be used once, more than once, or not at all. You may need to drag the split bar between panes or scroll to view content.)



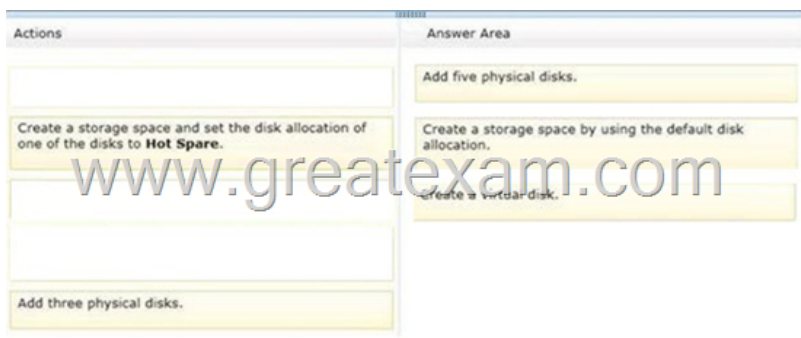
Answer:



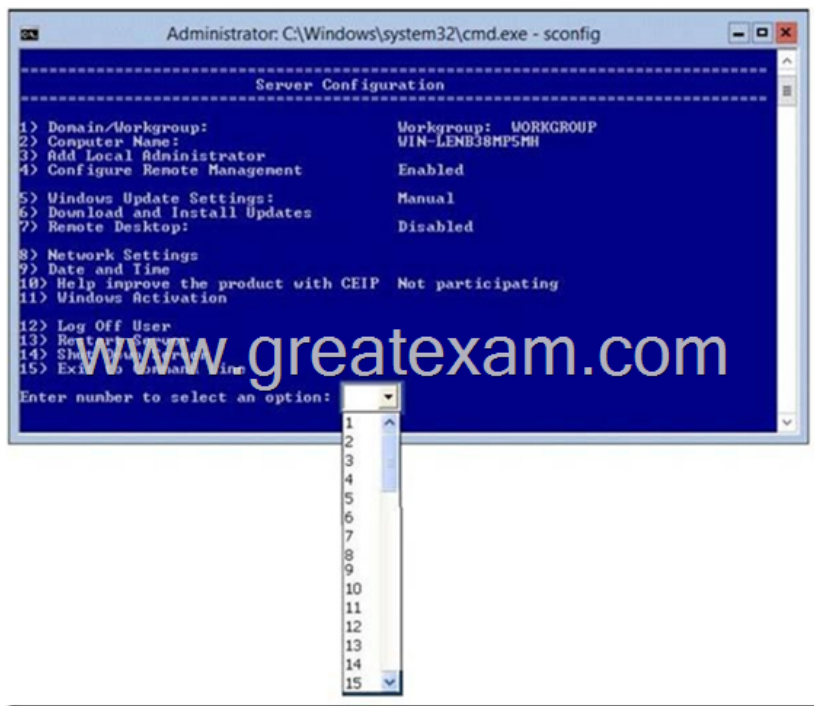
QUESTION 286 Drag and Drop Question You have a server that runs Windows Server 2012 R2. You need to create a volume that will remain online if two disks in the volume fail. The solution must minimize the number of disks used to create the volume. Which three actions should you perform in sequence? (To answer, move the appropriate three actions from the list of actions to the answer area and arrange them in the correct order.)



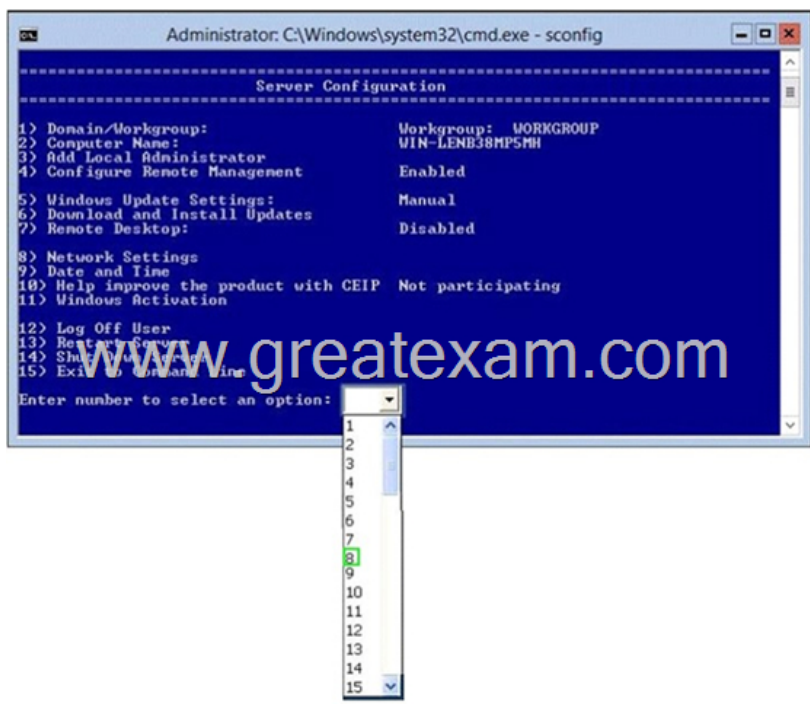
Answer:



QUESTION 287 Hotspot Question Your network contains an Active Directory domain named contoso.com. The domain contains a server named Server that runs Windows Server 2012 R2. You perform a Server Core Installation of Windows Server 2012 R2 on a new server. You need to ensure that you can add the new server to Server Manager on Server1. What should you configure on the new server? To answer, select the appropriate setting in the answer area.



Answer:



QUESTION 288 You work as an administrator at L2P.com. The L2P.com network consists of a single domain named L2P.com. All servers in the L2P.com domain, including domain controllers, have Windows Server 2012 installed. You have been instructed to modify the name of the local Administrator account on all L2P.com workstations. You want to achieve this using as little administrative effort as possible. Which of the following actions should you take? You should consider configuring the Security Options settings via the Group Policy A. You should consider configuring the Security Options settings via the Group Policy Management Console (GPMC). B. You should consider navigating to Local Users and Groups via Computer C. You should consider configuring the replication settings. D. You should consider navigating to Local Users and Groups via Computer Management on each workstation. Answer: A

QUESTION 289 Your network contains an Active Directory domain named contoso.com. The domain contains a server named Server1. Server1 runs Windows Server 2012 R2. An administrator creates a security template named Template1. You need to Apply Template1 to Server1. Which snap-in should you use? A. Security

TemplatesB. Authorization ManagerC. Security Configuration and AnalysisD. Resultant Set of Policy Answer: CExplanation: The Security Configuration and Analysis tool contains the Local Security Policy snap-in that is used to apply templates.

<http://technet.microsoft.com/en-us/library/bb742512.aspx>

<http://technet.microsoft.com/en-us/library/cc739442%28v=WS.10%29.aspx> QUESTION 290Your network contains an Active Directory forest named contoso.com. The forest contains a single domain. The domain contains two domain controllers named DC1 and DC2 that run Windows Server 2012 R2. The domain contains a user named User1 and three global security groups named Group1, Group2 and, Group3. You need to add User1 to Group1, Group2, and Group3. Which cmdlet should you run? A. Add-AdPrincipalGroupMembershipB. Install- AddsDomainControllerC. Install- WindowsFeatureD. Install-AddsDomainE. Rename-AdObjectF. Set-AdAccountControl G. Set-AdGroupH. Set-User Answer: A If you want to prepare for 70-410 exam in shortest time, with minimum effort but for most effective result, you can use Greatexam 70-410 Practice Test which simulates the actual testing environment and allows you to focus on various sections of 70-410 Exam. Our candidates walk into the testing room as confident as a Certification Administrator. So you can pass the exam without any question.

<http://www.greatexam.com/70-410-exam-questions.html>