

## Braindump2go New Updated Official Microsoft 70-662 Practice Tests Guarantee 100% Real Exam Questions and Answers!(261-270)

**MICROSOFT NEWS: 70-662 Exam Questions has been Updated Today! Get Latest 70-662 VCE and 70-662 PDF Instantly! Welcome to Download the Newest Braindump2go 70-662 VCE&70-662 PDF Dumps:**

<http://www.braindump2go.com/70-662.html> (507 Q&As) Braindump2go New Published Microsoft 70-662 Dumps PDF Contains the latest questions from Microsoft Exam Center! 100% Certification got guaranteed! Exam Code: 70-662 Exam Name TS: Microsoft Exchange Server 2010, Configuring Certification Provider: Microsoft Corresponding Certifications: MCITP, MCITP: Enterprise Messaging Administrator on Exchange 2010, MCTS, MCTS: Microsoft Exchange Server 2010, Configuring 70-662 Dumps, 70-662 PDF, 70-662 PDF eBook, 70-662 Braindump, 70-662 Study Guide, 70-662 Book, 70-662 Practice Test, 70-662 Dumps PDF, 70-662 VCE, 70-662 VCE Dumps, 70-662 Valid Dumps, 70-662 Exam Questions Free, 70-662 Dumps, 70-662 Free Dumps, 70-662 Questions and Answers Free, 70-662 Braindump PDF, 70-662 Braindump VCE, 70-662 Preparation

**TS: Microsoft Exchange**



Questions and Answers : 507  
Q&As

Updated: Jan 02, 2016

\$129.99 **\$99.99**

[PDF DEMO](#)

[CHECK OUT](#)

QUESTION 261 Your company has offices in New York and Montreal. Each office is configured as an Active Directory site. You have an Exchange Server 2010 Service Pack 1 (SP1) organization. The organization contains five servers. The servers are configured as shown in the following table. Each Mailbox server contains two mailbox databases. All users have a mailbox on their local Mailbox server. Server3 contains a public folder database. You deploy Outlook Anywhere. All of the users who connect to their mailbox from the Internet use Outlook Anywhere. All of the users who connect to their mailbox from the internal network use RPC. Some of the users who connect to their mailbox from the Internet report that they are unable to view MailTips. You verify that all of the users who connect to their mailbox from the internal network can view MailTips. You need to ensure that all of the users can view MailTips.

Server name	Server role	Server site
Server1	Client Access Hub Transport	New York
Server2	Client Access	Montreal
Server3	Mailbox	New York
Server4	Mailbox	Montreal
Server5	Edge Transport	New York

A. the Outlook Web App mailbox policy B. the email address policy C. the mailbox databases D. the EWS virtual directory E. the Client Access array F. an Attachment Filter agent G. the Autodiscover DNS record H. the mailbox features I. the Exchange ActiveSync mailbox policy  
Answer: D  
Explanation: We would modify the authentication settings on the EWS directory.  
Reference: <http://technet.microsoft.com/en-us/library/dd297974.aspx>

<http://social.technet.microsoft.com/Forums/en-US/exchange2010/thread/55236cec-a6e6-474e-841b-89d7e2adae86/>  
<http://blogs.dirteam.com/blogs/davestork/archive/2010/11/25/exchange-2010-mailtips-not-working-with-outlook-anywhere-users.aspx>

QUESTION 262 Your company has offices in New York and Montreal. Each office is configured as an Active Directory site. You have an Exchange Server 2010 Service Pack 1 (SP1) organization. The organization contains five servers. The servers are configured as shown in the following table. Each Mailbox server contains two mailbox databases. All users have a mailbox on their local Mailbox server. Server3 contains a public folder database. You create a Client Access array named casarray1.contoso.com. You need to ensure that all of the users connect to casarray1.contoso.com when they open their mailbox by using Microsoft Outlook

2010. What should you modify?

Server name	Server role	Server site
Server1	Client Access Hub Transport	New York
Server2	Client Access Hub Transport	Montreal
Server3	Mailbox	New York
Server4	Mailbox	Montreal
Server5	Edge Transport	New York

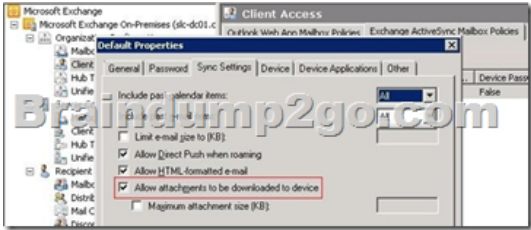
A. the mailbox databasesB. the Exchange ActiveSync mailbox policyC. an Attachment Filter agentD. the mailbox features  
E. the email address policyF. the Outlook Web App mailbox policyG. the Autodiscover DNS recordH. the Client Access arrayI. the EWS virtual directory Answer: AExplanation: Set-MailboxDatabase <name of DB>-RpcClientAccessServer "outlook.domain.com"

[http://www.msexchange.org/articles\\_tutorials/exchange-server-2007/planningarchitecture/uncovering-newrpc-client-access-service-exchange-2010-part1.html](http://www.msexchange.org/articles_tutorials/exchange-server-2007/planningarchitecture/uncovering-newrpc-client-access-service-exchange-2010-part1.html)

QUESTION 263Your company has offices in New York and Montreal. Each office is configured as an Active Directory site. You have an Exchange Server 2010 Service Pack 1 (SP1) organization. The organization contains five servers. The servers are configured as shown in the following table.Each Mailbox server contains two mailbox databases. All users have a mailbox on their local Mailbox server. Server3 contains a public folder database. You need to prevent users from downloading email attachments from their Windows Phone 7 devices. What should you modify?

Server name	Server role	Server site
Server1	Client Access Hub Transport	New York
Server2	Client Access Hub Transport	Montreal
Server3	Mailbox	New York
Server4	Mailbox	Montreal
Server5	Edge Transport	New York

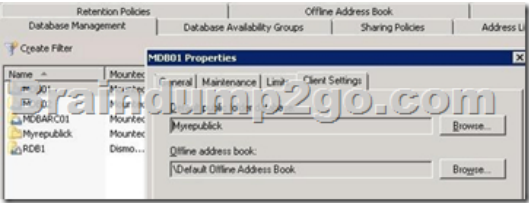
A. the mailbox featuresB. the email address policyC. the EWS virtual directoryD. the Autodiscover DNS recordE. the mailbox databasesF. the Exchange ActiveSync mailbox policyG. the Client Access arrayH. an Attachment Filter agentI. the Outlook Web App mailbox policy Answer: FExplanation:



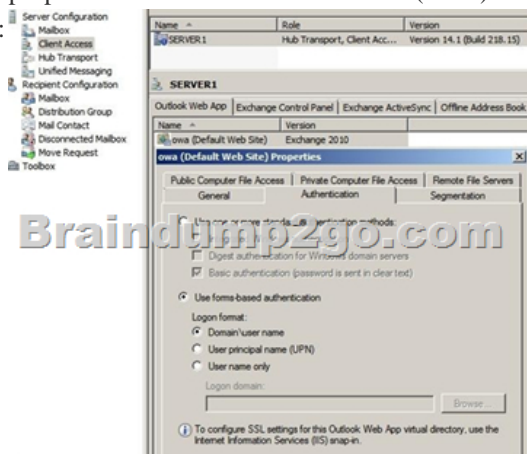
QUESTION 264Your company has offices in New York and Montreal. Each office is configured as an Active (Directory site. You have an Exchange Server 2010 Service Pack 1 (SP1) organization. The organization contains five servers. The servers are configured as shown in the following table.Each Mailbox server contains two mailbox databases. All users have a mailbox on their local Mailbox server. Server3 contains a public folder database. You create a new offline address book (OAB) for each office. You need to ensure that the users in each office download the OAB created for the respective office. What should you modify?

Server name	Server role
Server1	Client A Hub Tra
Server2	Client A Hub Tra
Server3	Mailbox
Server4	Mailbox
Server5	Edge Tr

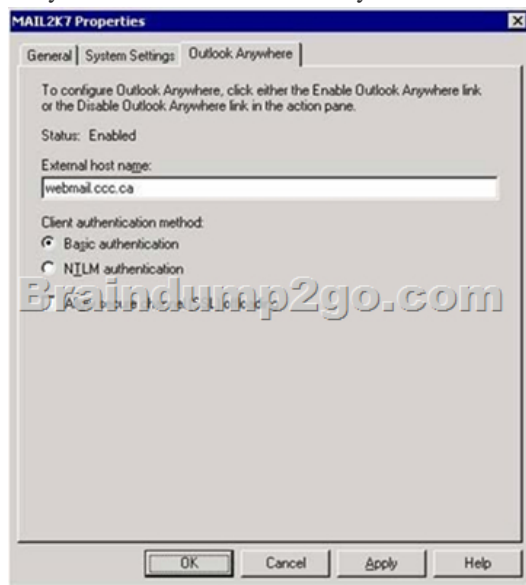
A. the Outlook Web App mailbox policyB. the email address policyC. the Autodiscover DNS recordD. the Client Access arrayE. the Exchange ActiveSync mailbox policyF. the mailbox databasesG. the EWS virtual directoryH. an Attachment Filter agentI. the mailbox features Answer: FExplanation:



QUESTION 265 Your network contains an Exchange Server 2010 SP1 organization named contoso.com. The organization contains a Client Access server named server1.contoso.com and a domain controller named dc1.contoso.com. All external users access their calendar and view their email messages by using a web browser. The users report that they are required to type their domain name when they log on to their mailbox. You need to ensure that the users are NOT required to type their domain name when they log on. What should you do? A. Modify the properties of the Client Access server object. B. Modify the Casredirect.aspx file. C. Run the Set-Imapsettings cmdlet. D. Modify the properties of the Exchange ActiveSync virtual directory. E. Run the New-OwaMailboxPolicy cmdlet. F. Modify the Redirect.aspx file. G. Run the New-ActiveSyncMailboxPolicy cmdlet. H. Modify the properties of the OWA virtual directory. I. Run the Export-ExchangeCertificate cmdlet. J. Run the Set-OfflineAddressBook cmdlet. K. Modify the properties of the offline address book (OAB) virtual directory. L. Run the Set-PopSettings cmdlets. Answer: H Explanation:

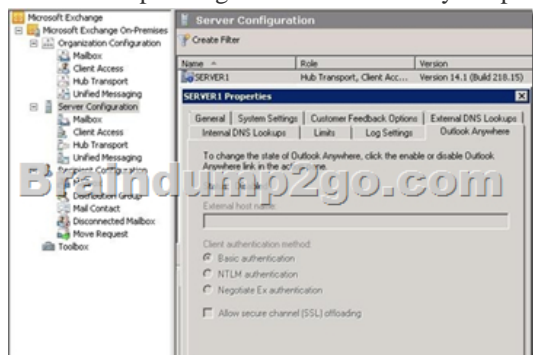


QUESTION 266 Your network contains an Exchange Server 2010 Service Pack 1 (SP1) organization named contoso.com. The organization contains a Client Access server named server1.contoso.com and a domain controller named dc1.contoso.com. You need to modify the external host name for Outlook Anywhere. What should you do? A. Run the Set-OfflineAddressBook cmdlet. B. Run the Export-ExchangeCertificate cmdlet. C. Modify the Redirect.aspx file. D. Modify the Casredirect.aspx file. E. Modify the properties of the Client Access server object. F. Modify the properties of the offline address book (OAB) virtual directory. G. Run the Set-ImapSettings cmdlet. H. Modify the properties of the Exchange ActiveSync virtual directory. I. Run the Set-PopSettings cmdlet. J. Modify the properties of the OWA virtual directory. K. Run the New-ActiveSyncMailboxPolicy cmdlet. L. Run the New-OwaMailboxPolicy cmdlet. Answer: E Explanation:

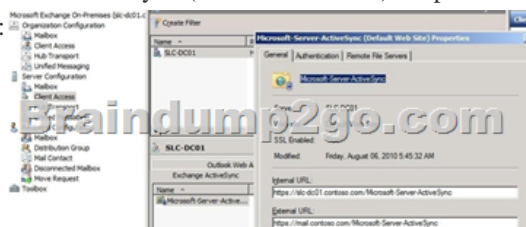


Reference: <http://technet.microsoft.com/en-us/library/aa996902.aspx> QUESTION 267 Your network contains an Exchange Server 2010 Service Pack 1 (SP1) organization named contoso.com. The organization contains a Client Access server named server1.contoso.com and a domain controller named dc1.contoso.com. You need to ensure that all Outlook Anywhere SSL sessions can be terminated by the firewall. The solution must ensure that Server1 will accept non-SSL sessions from the firewall. What

should you do? A. Run the Export-ExchangeCertificate cmdlet.B. Modify the properties of the Client Access server object.C. Run the New-ActiveSyncMailboxPolicy cmdlet.D. Modify the properties of the OWA virtual directory.E. Modify the Casredirect.aspx file,F. Modify the Redirect.aspx file.G. Modify the properties of the Exchange ActiveSync virtual directory.H. Run the Set-OfflineAddressBook cmdlet.I. Run the New-OwaMailboxPolicy cmdlet.J. Pun the Set-PopSettings cmdlet.K. Run the Set-ImapSettings cmdlet.L. Modify the properties of the offline address book (OAB) virtual directory. Answer: BExplanation:



Reference:<http://technet.microsoft.com/en-us/library/bb123542.aspx> QUESTION 268Your network contains an Exchange Server 2010 Service Pack 1 (SP1) organization named contoso.com. The organization contains a Client Access server named serven.contoso.com and a domain controller named dci.contoso.com. You need to ensure that users who have a Windows Phone 7 device can connect to the Exchange organization by using the mail.contoso.com host name. The solution must ensure that all of the Windows Phone 7 devices can use the Autodiscover service.What should you do? A. Modify the Casredirect.aspx file,B. Run the Ex port-Exchange Certificate cmdlet.C. Modify the properties of the Client Access server object.D. Run the Set-OfflineAddressBook cmdlet.E. Modify the properties of the Exchange ActiveSync virtual directory.F. Modify the properties of the offline address book (OAB) virtual directory.G. Run the Nen-ActiveSyncMailboxPolicy cmdlet.H. Run the Set-PopSettings cmdlet.I. Run the New-OwaMailboxPolicy cmdlet.J. Run the Set-ImapSettings cmdlet.K. Modify the Redirect.aspx file.L. Modify the properties of the OWA virtual directory. Answer: EExplanation:Under the Server Configuration -> Client Access -> Exchange ActiveSync node you can change the Microsoft Server ActiveSync (Default Web Site) Properties. In here you can modify both the Internal and External Exchange ActiveSync URLs:



QUESTION 269You have an Exchange Server 2010 SP1 organization. The organization contains two Mailbox server that are members of a database availability group (DAG). The DAG is configured to user a static IP address. You need to change the IP address of the DAG. Which tool should you use? A. the Set-DatabaseAvailabilityGroup cmdlet.B. the Exchange Control Panel (ECP).C. the Set-DatabaseAvailabilityGroupServer cmdlet.D. the Set-MailboxServer cmdlet. Answer: AExplanation: Set-DatabaseAvailabilityGroup -Identity <DatabaseAvailabilityGroupIdParameter>-DatabaseAvailabilityGroupIpAddresses <IPAddress[]>Example: Set-DatabaseAvailabilityGroup -identity "DAG1" -DatabaseAvailabilityGroupIpAddress 192.168.1.204

Reference:<http://technet.microsoft.com/en-us/library/dd297934.aspx> QUESTION 270Your network contains an Active Directory domain named contoso.com. The network contains a server named Server1 that runs Exchange Server 2010 Service Pack 1 (SP1). The Exchange organization contains 500 mailboxes. All of the mailboxes are stored on a mailbox database named DB1. You need to provide a user named User1 with the ability to open the mailbox of another user named User2. User1 must only be able to open the mailbox of User2. Which PowerShell cmdlet should you use? A. New-RoleAssignmentPolicyB. Set-MailboxC. Add-MailboxPermissionD. New-ManagementRoleE. New-ManagementRole?tryF. New-ManagementRoleAssignmentG. New-RoleGroupH. Add-ADPermissionI. Set-DistributionGroupJ. New-MailboxAuditSearchLogK. New-ManagementScopeL. New-EmailAddressPolicyM. Add-ManagementRoleEntry Answer: CExplanation:Add-MailboxPermission "User2"-User "User1"-AccessRights FullAccess For those who feel the overwhelming anxiety before their 70-662 exam,Braindump2go Latest updated 70-662 Exam Dumps will help you Pass 100% in a short time preparation! 70-662 Exam Dumps PDF & VCE Full Version

Instant Download!

## TS: Microsoft Exchange Server 2010, Configuring: 70-662



Questions and Answers : 507  
Q&As

Updated: Jan 02, 2016

~~\$129.99~~ **\$99.99**

PDF DEMO

**CHECK OUT**

**Product Description Exam Number/Code: 70-662**

**Exam Number/Code: 70-662**

"TS: Microsoft Exchange Server 2010, Configuring", also known as 70-662 exam, is a Microsoft Certification. With the complete collection of questions and answers, Braindump2go has assembled to take you through 507 Q&As to your 70-662 Exam preparation. In the 70-662 exam resources, you will cover every field and category in Microsoft MCITP helping to ready you for your successful Microsoft Certification.

### Free Demo Download

Braindump2go offers free demo for 70-662 exam (TS: Microsoft Exchange Server 2010, Configuring). You can check out the interface, question quality and usability of our practice exams before you decide to buy it.

☒ **Printable PDF** ☒ **Premium VCE + VCE Simulator**

FREE DOWNLOAD: NEW UPDATED 70-662 PDF Dumps & 70-662 VCE Dumps from Braindump2go:  
<http://www.braindump2go.com/70-662.html> 507 Q&As)