

## [Braindump2go Microsoft 70-662 Study Guide Free Version (131-140)]

**MICROSOFT NEWS: 70-662 Exam Questions has been Updated Today! Get Latest 70-662 VCE and 70-662 PDF Instantly! Welcome to Download the Newest Braindump2go 70-662 VCE&70-662 PDF Dumps:**

<http://www.braindump2go.com/70-662.html> (507 Q&As) 2015 Free Download of Latest Microsoft 70-662 Practice Exam Questions from Braindump2go will help you have a 100% success of 70-662 real exam! All questions are the latest checked and released! Answers are 100% correct guaranteed! In order to increase your confidence, 100% Full Money Back Guarantee is promised by Braindump2go! Instant Download Now! Exam Code: 70-662 Exam Name TS: Microsoft Exchange Server 2010, Configuring Certification Provider: Microsoft Corresponding Certifications: MCITP, MCITP: Enterprise Messaging Administrator on Exchange 2010, MCTS, MCTS: Microsoft Exchange Server 2010, Configuring 70-662 Dumps, 70-662 PDF, 70-662 PDF eBook, 70-662 Braindump, 70-662 Study Guide, 70-662 Book, 70-662 Practice Test, 70-662 Dumps PDF, 70-662 VCE, 70-662 VCE Dumps, 70-662 Valid Dumps, 70-662 Exam Questions Free, 70-662 Dumps, 70-662 Free Dumps, 70-662 Questions and Answers Free, 70-662 Braindump PDF, 70-662 Braindump VCE, 70-662 Preparation

**TS: Microsoft Exchange Server 2010, Configuring: 70-662**



Questions and Answers : 507  
Q&As

Updated: Jan 02, 2016

~~\$120.00~~ **\$99.99**

PDF DEMO

**CHECK OUT**

**Product Description Exam Number/Code: 70-662**

**Exam Number/Code: 70-662**

"TS: Microsoft Exchange Server 2010, Configuring", also known as 70-662 exam, is a Microsoft Certification. With the complete collection of questions and answers, Braindump2go has assembled to take you through 507 Q&As to your 70-662 Exam preparation. In the 70-662 exam resources, you will cover every field and category in Microsoft MCITP helping to ready you for your successful Microsoft Certification.

**Free Demo Download**

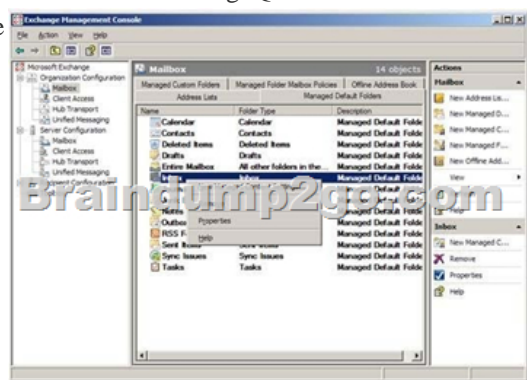
Braindump2go offers free demo for 70-662 exam (TS: Microsoft Exchange Server 2010, Configuring). You can check out the interface, question quality and usability of our practice exams before you decide to buy it.

☒ **Printable PDF** ☒ **Premium VCE + VCE Simulator**

QUESTION 131 Your network contains Mailbox servers that run Exchange Server 2007 and Exchange Server 2010. You need to ensure that all e-mail messages located in the Inbox folders of all users are deleted after 120 days. What should you create first? A. a new managed custom folder B. a new message classification C. a new retention policy D. new managed content settings  
Answer: D QUESTION 132 You have an Exchange Server 2010 organization. You need to ensure that items in a user's Inbox folder that are older than 60 days are moved to a custom folder. What should you do first? A. Create a managed custom folder. Create a transport rule. B. Create a new mail folder by using Microsoft Office Outlook. Create a journal rule. C. Create a managed custom folder. Run the Managed Content Settings wizard from the Inbox managed default folder. D. Create a new mail folder by using Microsoft Office Outlook. Run the Managed Content Settings wizard from the Inbox managed default folder. Answer: C Explanation:

<http://technet.microsoft.com/en-us/library/ee364744.aspx>

[http://blogs.perficient.com/microsoft/2008/08/exchange-2007-and-unified-messaging-retentionpolicies/New-ManagedFolder-Name 'Business Critical'-FolderName 'Business Critical'-StorageQuota '10Gb'-Comment 'Messages in this folder are retained for 3 years'-MustDisplayComment \\$true](http://blogs.perficient.com/microsoft/2008/08/exchange-2007-and-unified-messaging-retentionpolicies/New-ManagedFolder-Name 'Business Critical'-FolderName 'Business Critical'-StorageQuota '10Gb'-Comment 'Messages in this folder are retained for 3 years'-MustDisplayComment $true)





QUESTION 133 You have an Exchange Server 2010 organization named contoso.com. All users have a Personal Archive. You need to ensure that messages that are older than 90 days are moved from the user's mailbox to the Personal Archive. What should you do? A. Create a retention tagAssign the retention tag to a retention policyApply the retention policy to all usersB. Create a retention tagAssign the retention tag to a retention policyCreate a journal ruleC. Create managed custom folderRun the New Managed Content Settings wizardCreate a journal ruleD. Run the New Managed Content Settings wizardCreate a new managed folder mailbox policyApply the policy to all users Answer: A QUESTION 134 You have an Exchange Server 2010 organization. You need to prevent internal users from sending messages that contain the phrase "Company Confidential" to external users. What should you create? (Choose two.) A. a Hub Transport ruleB. a Managed Folder Mailbox policyC. a message classificationD. a Send connectorE. a Receive connectorF. an Edge Transport rule Answer: ACEExplanation:

<http://technet.microsoft.com/en-us/library/bb124737.aspx><http://technet.microsoft.com/en-us/library/dd351127.aspx>

<http://technet.microsoft.com/en-us/library/bb123498.aspx>

QUESTION 135 You have an exchange server 2010 mailbox server. All users use microsoft office outlook 2010 to access their mailboxes. You implement a policy that automatically deletes e-mail messages that are older than 90 days. You need to provide users with an alternate location to store email messages that are older than 90 days. Administrators must be able to find the messages in both locations when they perform multimailbox searches. What should you create? A. a .pst file for each user that is stored in a shared folderB. a Personal Archive for each userC. a journal ruleD. a Retention Policy Answer: BExplanation:

<http://technet.microsoft.com/en-us/library/dd979795.aspx>

QUESTION 136 You have an Exchange Server 2010 organization. You need to create Personal Archives. Which tool should you use? A. Active Directory Users and ComputersB. Exchange Control Panel (ECP)C. Exchange Management Console (EMC)D. Microsoft Office Outlook Answer: C

QUESTION 137 You have an Exchange Server 2010 organization that contains three Mailbox servers named MBX1, MBX2, and MBX3. You configure a journaling mailbox on a server named MBX3. You configure journaling on several mailboxes located on MBX1 and MBX2. You need to ensure that journaling occurs if MBX3 fails. What should you do? A. Configure an alternate journaling mailbox on MBX2.B. Configure a second e-mail address for the journaling mailbox.C. Configure the shadow redundancy settings in the organization.D. Create a retention tag and then assign it to a new retention policy. Answer: A

QUESTION 138 You have an Exchange Server 2010 organization. Users on the network use HTTPS to connect to Outlook Web App (OWA). The Client Access server uses a certificate issued by an internal certification authority (CA). You plan to deploy an e-mail encryption solution for all users. You need to ensure that users can send and receive encrypted e-mail messages by using S/MIME from OWA. What should you do? A. Issue a certificate to each user.B. Instruct all OWA users to import a root CA certificate.C. Modify the authentication settings of the OWA virtual directory.D. Configure the Client Access Server to use a certificate issued by a third-party CA. Answer: AExplanation:

<http://technet.microsoft.com/en-us/library/bb738140.aspx>

QUESTION 139 You have an Exchange Server 2010 organization. A user named User1 connects to his mailbox by using Microsoft Office Outlook. User1 reports that he is unable to send encrypted e-mail messages to an external recipient named User2. You verify that User1 and User2 have e-mail encryption certificates. You need to ensure that User1 can send encrypted e-mail messages to User2. What should you do first? A. Instruct User2 to add a delegate.B. Instruct User2 to send a signed e-mail message to User1.C. Instruct User1 to send a signed e-mail message to User2.D. Instruct User1 to modify the sensitivity settings of the e-mail message. Answer: B

QUESTION 140 You have an Exchange Server 2010 Edge Transport server named Edge1. A partner organization has another Exchange Server 2010 Edge Transport server named Edge2. You need to encrypt all SMTP communication between Edge1

and Edge2. The solution must ensure that both servers use a trusted certificate. What should you do? A. Create a new Edge Subscription file on Edge1. Copy the file to Edge2.B. From Edge1 and Edge2, enable Exchange Server authentication.C. From Edge1 and Edge2, configure mutual Transport Layer Security (TLS).D. From Edge1, run the ExportEdgeConfig.ps1 script. From Edge2, run the ImportEdgeConfig.ps1 script. Answer: C 2015 Latest Released Microsoft 70-662 Exam Dumps Free Download From Braindump2go Now! All Questions and Answers are checked again by Braindump2go Experts Team, 100% Real Questions and Correct Answers Guaranteed! Full Money Back Guarantee Show our Confidence in helping you have a 100% Success of Exam 70-662! Just have a try!

### TS: Microsoft Exchange Server 2010, Configuring: 70-662



Questions and Answers : 507  
Q&As

Updated: Jan 02, 2016

~~\$420.99~~ **\$99.99**

[PDF DEMO](#)

[CHECK OUT](#)

**Product Description Exam Number/Code: 70-662**

**Exam Number/Code: 70-662**

"TS: Microsoft Exchange Server 2010, Configuring", also known as 70-662 exam, is a Microsoft Certification. With the complete collection of questions and answers, Braindump2go has assembled to take you through 507 Q&As to your 70-662 Exam preparation. In the 70-662 exam resources, you will cover every field and category in Microsoft MCITP helping to ready you for your successful Microsoft Certification.

#### Free Demo Download

Braindump2go offers free demo for 70-662 exam (TS: Microsoft Exchange Server 2010, Configuring). You can check out the interface, question quality and usability of our practice exams before you decide to buy it.

☒ **Printable PDF** ☒ **Premium VCE + VCE Simulator**

FREE DOWNLOAD: NEW UPDATED 70-662 PDF Dumps & 70-662 VCE Dumps from Braindump2go:  
<http://www.braindump2go.com/70-662.html> 507 Q&As)