


## [PDF&VCEBraindump2go Latest 70-411 Exam Questions Free Download (151-160)]

MICROSOFT OFFICIAL: New Updated 70-411 Exam Questions from Braindump2go 70-411 PDF Dumps and 70-411 VCE Dumps! Welcome to Download the Newest Braindump2go 70-411 VCE&PDF Dumps:  
<http://www.braindump2go.com/70-411.html> (322 Q&As) Do you want to pass Microsoft 70-411 Exam ? If you answered YES, then look no further. Braindump2go offers you the best 70-411 exam questions which cover all core test topics and certification requirements. All REAL questions and answers from Microsoft Exam Center will help you be a 70-411 certified! Exam Code: 70-411 Exam Name Administering Windows Server 2012 Certification Provider: Microsoft Corresponding Certifications: MCSA, MCSA: Windows Server 2012, MCSE, MCSE: Desktop Infrastructure, MCSE: Private Cloud, MCSE: Server Infrastructure  
Keywords: 70-411 Dumps, 70-411 Microsoft Exam Questions, 70-411 VCE, 70-411 PDF, 70-411 Practice Exams, 70-411 Practice Tests, 70-411 Book, 70-411 Study Guide

### Administering Windows Server 2012 R2 Exam: 70-411



**Product Description Exam Number/Code: 70-411**

**Exam Number/Code: 70-411**

"Administering Windows Server 2012 R2 Exam", also known as 70-411 exam, is a Microsoft Certification. With the complete collection of questions and answers, Braindump2go has assembled to take you through 322 Q&As to your 70-411 Exam preparation. In the 70-411 exam resources, you will cover every field and category in Microsoft MCSA helping to ready you for your successful Microsoft Certification.

**Questions and Answers : 322 Q&As**

Updated: Sep 14, 2015

~~\$429.99~~ **\$99.99**

[PDF DEMO](#)

[CHECK OUT](#)

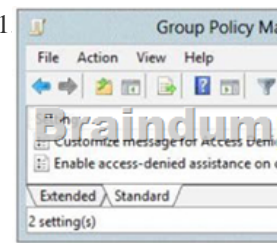
**Free Demo Download**

Braindump2go offers free demo for 70-411 exam (Administering Windows Server 2012 R2 Exam). You can check out the interface, question quality and usability of our practice exams before you decide to buy it.

☒ **Printable PDF** ☒ **Premium VCE + VCE Simulator**

QUESTION 151 You have a server named Server1 that runs Windows Server 2012 R2. You create a Data Collector Set (DCS) named DCS1. You need to configure DCS1 to log data to D:\logs. What should you do? A. Right-click DCS1 and click Properties. B. Right-click DCS1 and click Save template... C. Right-click DCS1 and click Data Manager... D. Right-click DCS1 and click Export list... Answer: A Explanation: To configure data management for a Data Collector Set1. In Windows Performance Monitor, expand Data Collector Sets and click User Defined. 2. In the console pane, right-click the name of the Data Collector Set that you want to configure and click Data Manager. 3. On the Data Manager tab, you can accept the default values or make changes according to your data retention policy. See the table below for details on each option. When Minimum free disk or Maximum folders is selected, previous data will be deleted according to the Resource policy you choose (Delete largest or Delete oldest) when the limit is reached. When Apply policy before the data collector set starts is selected, previous data will be deleted according to your selections before the data collector set creates its next log file. When Maximum root path size is selected, previous data will be deleted according to your selections when the root log folder size limit is reached. 4. Click the Actions tab. You can accept the default values or make changes. See the table below for details on each option. 5. When you have finished making your changes, click OK. QUESTION 152 You have a server named WSUS1 that runs Windows Server 2012 R2. WSUS1 has the Windows Server Update Services server role installed and has one volume. You add a new hard disk to WSUS1 and then create a volume on the hard disk. You need to ensure that the Windows Server Update Services (WSUS) update files are stored on the new volume. What should you do? A. From a command prompt, run wsutil.exe and specify the movecontent parameter. B. From the Update Services console, run the Windows Server Update Services Configuration Wizard. C. From the Update Services console, configure the Update Files and Languages option. D. From a command prompt, run wsutil.exe and specify the export parameter. Answer: A Explanation: A. configuration wizard will be run immediately after installation or at a later time. If you want to change the configuration later, you run WSUS Server Configuration Wizard from the Options page of the WSUS 3.0 Administration console. B. Changes the file system location where the WSUS server stores update files, and optionally copies any update files from the old location to the new location. C. The export command enables you to export update metadata to an export package file. You cannot use this parameter to export update files, update approvals, or server settings. D. Allows you to specify where store downloaded update file, will not move already downloaded updates [http://technet.microsoft.com/en-us/library/cc720475\(v=ws.10\).aspx](http://technet.microsoft.com/en-us/library/cc720475(v=ws.10).aspx)  
[http://technet.microsoft.com/en-us/library/cc708480\(v=ws.10\).aspx](http://technet.microsoft.com/en-us/library/cc708480(v=ws.10).aspx)  
[http://technet.microsoft.com/en-us/library/cc720466\(v=ws.10\).aspx](http://technet.microsoft.com/en-us/library/cc720466(v=ws.10).aspx) QUESTION 153 You have a server named FS1 that runs

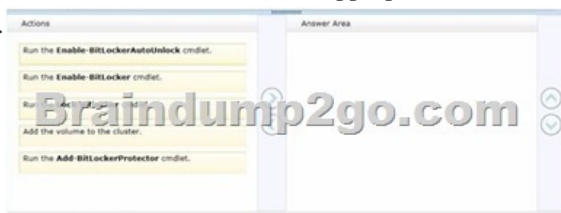
Windows Server 2012 R2. You install the File and Storage Services server role on FS1. From Windows Explorer, you view the properties of a shared folder named Share1 and you discover that the Classification tab is missing. You need to ensure that you can assign classifications to Share1 from Windows Explorer manually. What should you do? A. From Folder Options, clear Use Sharing Wizard (Recommend). B. Install the File Server Resource Manager role service. C. From Folder Options, select Show hidden files, folders, and drives. D. Install the Enhanced Storage feature. Answer: B QUESTION 154 Your network contains an Active Directory domain named contoso.com. The domain contains a file server named Server1. The File Server Resource Manager role service is installed on Server1. All servers run Windows Server 2012 R2. A Group Policy object (GPO) named GPO1 is linked to the organizational unit (OU) that contains Server1. The following graphic shows the configured settings in GPO1



Server1 contains a folder named Folder1. Folder1 is shared as Share1. You attempt to configure access-denied assistance on Server1, but the Enable access-denied assistance option cannot be selected from File Server Resource Manager. You need to ensure that you can configure access-denied assistance on Server1 manually by using File Server Resource Manager. What should you do? A. Set the Customize message for Access Denied errors policy setting to Enabled for GPO1. B. Set the Enable access-denied assistance on client for all file types policy setting to Enabled for GPO1. C. Set the Customize message for Access Denied errors policy setting to Not Configured for GPO1. D. Set the Enable access-denied assistance on client for all file types policy setting to Disabled for GPO1. Answer: C Explanation: Ensure that you can configure access-denied assistance

[http://technet.microsoft.com/en-us/library/hh831402.aspx#BKMK\\_1](http://technet.microsoft.com/en-us/library/hh831402.aspx#BKMK_1) QUESTION 155 Your network contains multiple Active Directory sites. You have a Distributed File System (DFS) namespace that has a folder target in each site. You discover that some client computers connect to DFS targets in other sites. You need to ensure that the client computers only connect to a DFS target in their respective site. What should you modify? A. The properties of the Active Directory sites B. The properties of the Active Directory site links C. The delegation settings of the namespace D. The referral settings of the namespace Answer: D Explanation: A. A site is a set of well-connected subnets. B. To control which sites replicate directly with each other C. Determines the users and groups granted permissions to manage the replication group D. A referral is an ordered list of servers that a client computer receives from a domain controller or namespace server when the user accesses a namespace root or DFS folder with targets. After the computer receives the referral, the computer attempts to access the first server in the list. If the server is not available, the client computer attempts to access the next server. If a server becomes unavailable, you can configure clients to fail back to the preferred server after it becomes available. [http://www.windowsnetworking.com/articles\\_tutorials/Configuring-DFS-Namespaces.html](http://www.windowsnetworking.com/articles_tutorials/Configuring-DFS-Namespaces.html)

[http://technet.microsoft.com/en-us/library/cc794914\(v=ws.10\).aspx](http://technet.microsoft.com/en-us/library/cc794914(v=ws.10).aspx) QUESTION 156 Your network contains an Active Directory domain named contoso.com. You have a failover cluster named Cluster1. All of the nodes in Cluster1 have BitLocker Drive Encryption (BitLocker) installed. You plan to add a new volume to the shared storage of Cluster1. You need to add the new volume to the shared storage. The solution must meet the following requirements:- Encrypt the volume.- Avoid using maintenance mode on the cluster. Which three actions should you perform? To answer, move the three appropriate actions from the list of actions to the answer area and arrange them in the correct order.



Answer:



Explanation:<http://technet.microsoft.com/en-us/library/jj649829.aspx> QUESTION 157Your network contains an Active Directory domain named contoso.com. The domain functional level in Windows Server 2008. All domain controllers run Windows Server 2008 R2. The domain contains a file server named Server1 that runs Windows Server 2012 R2. Server1 has a BitLocker Drive Encryption (BitLocker)-encrypted drive. Server1 uses a trusted Platform Module (TPM) chip. You enable the Turn on TPM backup to Active Directory Domain Services policy setting by using a Group Policy object (GPO). You need to ensure that you can back up the BitLocker recovery information to Active Directory.What should you do? A. Upgrade a domain controller to Windows 2012. B. Enable the Store BitLocker recovery information in the Active Directory Services (Windows Server2008 and Windows Vista) policy settings.C. Raise the forest functional level to Windows 2008 R2.D. Add a BitLocker data recovery agent Answer: B

Explanation:B. You should also configure AD DS before configuring BitLocker on client computers. If BitLocker is enabled first, recovery information for those computers will not be automatically added to AD DS. If necessary, recovery information can be backed up to AD DS after BitLocker has been enabled by using either the Manage-bde command-line tool or the BitLocker Windows Management Instrumentation (WMI) provider.[http://technet.microsoft.com/en-us/library/dd875529\(v=ws.10\).aspx](http://technet.microsoft.com/en-us/library/dd875529(v=ws.10).aspx)

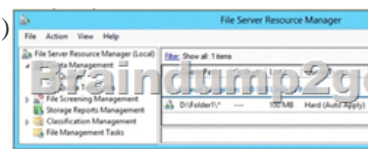
QUESTION 158Your company has a main office and a branch office. The main office is located in Seattle. The branch office is located in Montreal. Each office is configured as an Active Directory site. The network contains an Active Directory domain named adatum.com. The Seattle office contains a file server named Server1. The Montreal office contains a file server named Server2. The servers run Windows Server 2012 R2 and have the File and Storage Services server role, the DFS Namespaces role service, and the DFS Replication role service installed. Server1 and Server2 each have a share named Share1 that is replicated by using DFS Replication. You need to ensure that users connect to the replicated folder in their respective office when they connect to \contoso.comShare1.Which three actions should you perform? (Each correct answer presents part of the solution. Choose three.) A. Create a replication connection.B. Create a namespace.C. Share and publish the replicated folder.D. Create a new topology.E. Modify the Referrals settings. Answer: BCE

Explanation:To share a replicated folder and publish it to a DFS namespace Click Start, point to Administrative Tools, and then click DFS Management. In the console tree, under the Replication node, click the replication group that contains the replicated folder you want to share. In the details pane, on the Replicated Folders tab, right-click the replicated folder that you want to share, and then click Share and Publish in Namespace. In the Share and Publish Replicated Folder Wizard, click Share and publish the replicated folder in a namespace, and then follow the steps in the wizard.Note that: If you do not have an existing namespace, you can create one in the Namespace Path page in the Share and Publish Replicated Folder Wizard. To create the namespace, in the Namespace Path page, click Browse, and then click New Namespace.To create a namespace Click Start, point to Administrative Tools, and then click DFS Management.In the console tree, right-click the Namespaces node, and then click New Namespace. Follow the instructions in the New Namespace Wizard.To create a stand-alone namespace on a failover cluster, specify the name of a clustered file server instance on the Namespace Server page of the New Namespace Wizard. ImportantDo not attempt to create a domain-based namespace using the Windows Server 2008 mode unless the forest functional level is Windows Server 2003 or higher. Doing so can result in a namespace for which you cannot delete DFS folders, yielding the following error message: "The folder cannot be deleted. Cannot complete this function."

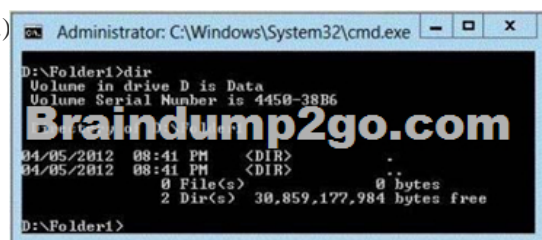
<http://technet.microsoft.com/en-us/library/cc731531.aspx> <http://technet.microsoft.com/en-us/library/cc772778%28v=ws.10%29.aspx> <http://technet.microsoft.com/en-us/library/cc732414.aspx> <http://technet.microsoft.com/en-us/library/cc772379.aspx>

<http://technet.microsoft.com/en-us/library/cc732863%28v=ws.10%29.aspx> <http://technet.microsoft.com/en-us/library/cc725830.aspx> <http://technet.microsoft.com/en-us/library/cc771978.aspx> QUESTION 159You have a server named Server1 that runs Windows

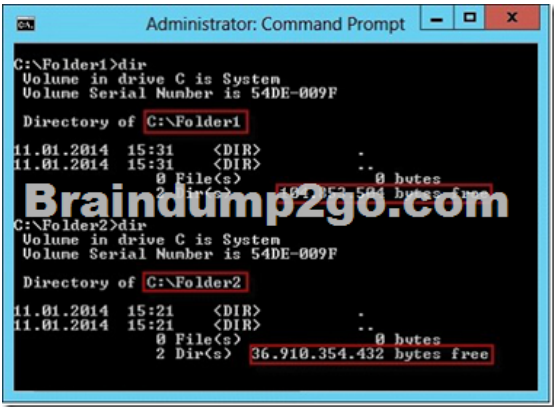
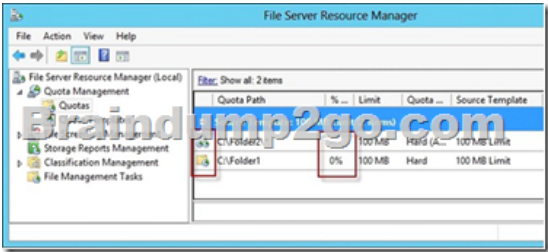
Server 2012 R2. An administrator creates a quota as shown in the Quota exhibit. (Click the Exhibit button.)



You run the dir command as shown in the Dir exhibit. (Click the Exhibit button.)



You need to ensure that D:Folder1 can only consume 100 MB of disk space. What should you do? A. From File Server Resource Manager, edit the existing quota.B. From the properties of drive D, enable quota management.C. From the Services console, set the Startup Type of the Optimize drives service to Automatic.D. From File Server Resource Manager, create a new quota. Answer: DExplanation:Create a new Quota on path, without using the auto apply template and create quota on existing and new subfolders



[http://technet.microsoft.com/en-us/library/cc755603\(v=ws.10\).aspx](http://technet.microsoft.com/en-us/library/cc755603(v=ws.10).aspx) QUESTION 160Your network contains an Active Directory domain named contoso.com. All servers run Windows Server 2012 R2. The domain contains an organizational unit (OU) named FileServers\_OU. FileServers\_OU contains the computer accounts for all of the file servers in the domain. You need to audit the users who successfully access shares on the file servers.Which audit category should you configure? To answer, select the appropriate category in the answer area.



Categories	Configuration
Account Logon	Not configured
Account Management	Not configured
Detailed Tracking	Not configured
DS Access	Not configured
Object Access	Not configured
Policy Change	Not configured
Privilege Use	Not configured
System	Not configured
Global Object Access Auditing	Not configured


Answer:

Categories	Configuration
Account Logon	Not configured
Account Management	Not configured
Detailed Tracking	Not configured
DS Access	Not configured
Object Access	Not configured
Policy Change	Not configured
Privilege Use	Not configured
System	Not configured
Global Object Access Auditing	Not configured

Explanation:<http://technet.microsoft.com/en-us/library/hh831382.aspx>

[http://technet.microsoft.com/en-us/library/cc766468\(v=ws.10\).aspx](http://technet.microsoft.com/en-us/library/cc766468(v=ws.10).aspx) Braindump2go Latest 70-411 Exam Dumps Released! 100% Real Questions - Dumps Qualification is the secret of Success! Prepare yourself to Face the 70-411 Exam with Real Exam Questions from Microsoft Official Exam Center, walk into the Testing Centre with confidence.

**Administering Windows Server 2012 R2 Exam: 70-411**



**Product Description Exam Number/Code: 70-411**

**Exam Number/Code: 70-411**

"Administering Windows Server 2012 R2 Exam", also known as 70-411 exam Certification. With the complete collection of questions and answers, Braindump2go assembled to take you through 322 Q&As to your 70-411 Exam preparation. resources, you will cover every field and category in Microsoft MCSA helping your successful Microsoft Certification.

**Free Demo Download**

Braindump2go offers free demo for 70-411 exam (Administering Windows Server 2012 R2 Exam). You can check out the interface, question quality and usability of our before you decide to buy it.

☒ Printable PDF   ☒ Premium VCE + VCE Simulator

Questions and Answers : 322 Q&As

Updated: Sep 14, 2015

~~\$429.99~~ **\$99.99**

[PDF DEMO](#)

[CHECK OUT](#)

**FREE DOWNLOAD: NEW UPDATED 70-411 PDF Dumps & VCE Dumps from Braindump2go:**

<http://www.braindump2go.com/70-411.html> (322 Q&As)