


# New Released PDF Dumps For Exam Microsoft 70-497 Shared By Braindump2go (91-100)

MICROSOFT NEWS: 70-497 Exam Questions has been Updated Today! Get Latest 70-497 VCE and 70-497 PDF Instantly! Welcome to Download the Newest Braindump2go 70-497 VCE&70-497 PDF Dumps: <http://www.braindump2go.com/70-497.html> (106 Q&As) 70-497 Exam Dumps are recently new updated by Microsoft Official! Braindump2go also updates all the 70-497 Exam Questions and now all the 106q are the latest(add many new questions this time)! Braindump2go is famous for our AMAZING 99.6% exam pass rate. Join our success! Then you can pass 70-497 Exam successfully under our professional help! We guarantee! Exam Code: 70-497Exam Name: Software Testing with Visual Studio 2012Certification Provider: MicrosoftCorresponding Certifications: MCSD, MCSD: Application Lifecycle Management70-497 Dumps,70-497 Exam Questions,70-497 VCE,70-497 PDF,70-497 Book,70-497 Study Material,70-497 Free Dumps,70-497 Dumps PDF,70-497 Certification,70-497 Software Testing with Visual Studio 2012,70-497 Exam Dumps,70-497 Exam Prep,70-497 Braindump,70-497 Practice Test,70-497 Practice Exam

Microsoft



Questions and Answers  
Updated: Nov 2, 2023  
\$429.00 \$99.00  
[PDF DEMO](#)  
[CHECK OUT](#)

QUESTION 91Your organization uses Microsoft Visual Studio Team Foundation Server (TFS) 2013. You are working with tests in the TFS Web Access.You have an existing test that uses the following parameters: @city, @state, and @postal code.You want to use the same parameters in a new test case.Which two actions should you perform? Each correct answer presents part of the solution. A. In the original test case, select convert to shared parameters.B. Open the original test case, and copy the parameters. C. Open the new test case, and paste the parameters.D. In the new test case, select add a shared parameter set. Answer: AD Explanation:Share parameters between test casesConvert existing parameters to shared parameters, so that you can use them and the associated data in other test cases.After you have created a shared parameter set, open another test case and add the shared parameter set to that test case. You can search for the shared parameter set by name.Reference: Repeat a test with different data QUESTION 92 Drag and Drop QuestionYour team uses the Microsoft Visual Studio Scrum process template for a project. Your team uses the Area to filter by Function, with subcategories pertinent to those functions.Your stakeholders want to be able to view requirements and quality reports by specific department.You need to modify the Test Case Readiness report to add a filter so that the report can be filtered appropriately.Which five actions should you perform in sequence? To answer, move the appropriate actions from the list of actions to the answer area and arrange them in the correct order.

Actions

Modify the Test Case Readiness report by using Report Builder.

Add the field from dsDepartment as a report filter to the Test Case Readiness report.

Repurpose the existing Business Value column to be used as the Department Requested By column.

Add a new dataset named dsDepartment to the report that contains the custom field.

Add the field dsDepartment to the body of the report.

Modify WIT for Product Backlog Item to add a Department Requested field.

Answer Area

Answer:

Actions

Modify the Test Case Readiness report by using Report Builder.

Add the field from dsDepartment as a report filter to the Test Case Readiness report.

Repurpose the existing Business Value column to be used as the Department Requested By column.

Add a new dataset named dsDepartment to the report that contains the custom field.

Add the field dsDepartment to the body of the report.

Modify WIT for Product Backlog Item to add a Department Requested field.

Answer Area

Modify the Test Case Readiness report by using Report Builder.

Add the field from dsDepartment as a report filter to the Test Case Readiness report.

Repurpose the existing Business Value column to be used as the Department Requested By column.

Add a list of departments to the Allowed Values for the field.

Add a new dataset named dsDepartment to the report that contains the custom field.

**QUESTION 93** Drag and Drop Question Your company's test team is working through their bug backlog and tracking their progress on the Bugs dashboard. The bug backlog continues to grow, but the reports that appear on the Bugs dashboard are neither accurate nor useful. You need to establish a best practice that will ensure the reports on the Bugs dashboard are accurate and useful. Which four actions should you perform in sequence? To answer, move the appropriate actions from the list of actions to the answer area and arrange them in the correct order. More than one order of answer choices may be correct. You will receive credit for any of the correct orders you select.

Actions	Answer Area
Assign a Priority and Severity to each bug.	
List the recent changesets associated with the bugs.	
Update the status of each bug as the development team finds, verifies, and checks it in.	
Assign each bug to the developer who is working to resolve it.	
Update the status of recent builds.	
Define the bugs, and specify the Sprint and Area/Subarea Paths.	

Answer:

Actions	Answer Area
Assign a Priority and Severity to each bug.	Assign a Priority and Severity to each bug.
List the recent changesets associated with the bugs.	
Update the status of each bug as the development team finds, verifies, and checks it in.	Update the status of each bug as the development team finds, verifies, and checks it in.
Assign each bug to the developer who is working to resolve it.	
Update the status of recent builds.	
Define the bugs, and specify the Sprint and Area/Subarea Paths.	Define the bugs, and specify the Sprint and Area/Subarea Paths.

**QUESTION 94** You are using Microsoft Test Manager (MTM). You are using the Microsoft Solution Framework (MSF) for Agile Software Development process template. SharePoint integration and reporting are enabled. You want to assess the progress of your team's testing effort. To do this, you need to:- Identify gaps in test coverage.- Monitor test progress for each requirement, and. - Identify how many test cases are passing or failing for each requirement. What should you do? A. Open the test plan in MTM and look at the test plan status. B. From Team Explorer, open the Stories Progress report. C. From the team portal, open the Test Plan Progress Excel Report. D. From the team portal, open the User Story Test Status Excel Report. Answer: D Explanation: You can use the User Story Test Status report to help determine gaps in test coverage and monitor test progress for each user story. This report indicates how many test cases are passing or failing for each user story. This report is available only when the team creates test plans and starts to run tests by using Microsoft Test Manager. Reference: User Story Test Status Excel Report (Agile)

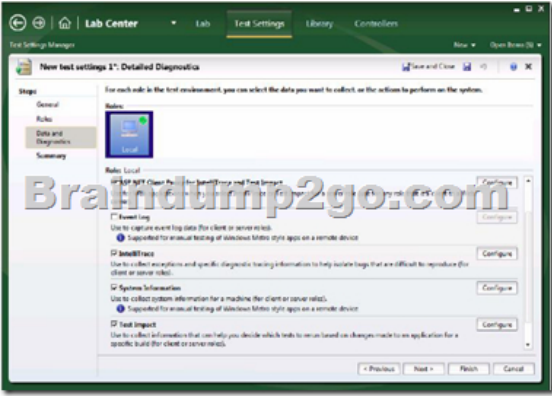
**QUESTION 95** Drag and Drop Question You are using Microsoft Test Manager (MTM) to manage your testing efforts. You want to see how manual testing is going for the current plan. You need to see a list of manual test runs grouped first by Test Status and then by State. What should you do? (To answer, move the three appropriate actions from the list of actions to the answer area and arrange them in the correct order.)

Actions	Answer Area
Drag the <b>State</b> column header into the group by region.	
Navigate to the Analyze Test Runs view and select <b>Manual</b> runs.	
Click the <b>State</b> column header.	
Drag the <b>Test Status</b> column header into the group by region.	
Click the <b>Test Status</b> column header.	

Answer:

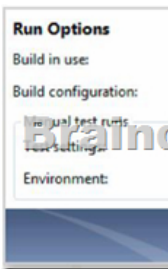
Actions	Answer Area
Drag the <b>State</b> column header into the group by region.	Navigate to the Analyze Test Runs view and select <b>Manual</b> runs.
Navigate to the Analyze Test Runs view and select <b>Manual</b> runs.	Click the <b>State</b> column header.
Click the <b>State</b> column header.	Drag the <b>Test Status</b> column header into the group by region.
Drag the <b>Test Status</b> column header into the group by region.	Drag the <b>State</b> column header into the group by region.
Click the <b>Test Status</b> column header.	

**QUESTION 96** You are using Microsoft Test Manager (MTM) to run a test case. During the previous run of the same test case, a bug was filed. The developer could not reproduce the bug. The test settings assigned to the test plan do not include an adapter to collect IntelliTrace data. You have created a test setting that includes the IntelliTrace data adapter. You need to re-run the test with the settings that have the IntelliTrace data adapter. What should you do? A. Select the test case. Select the Run with option. Select the test setting that collects IntelliTrace information. B. Select the test suite that contains the test case. Click Settings, then right-click IntelliTrace to enable it. C. Open the test case. Click Settings to select the settings that have the IntelliTrace data adapter. D. Run the test case with its default settings. Click View Results and locate the IntelliTrace file that was created when the test case was executed. Answer: A Explanation: - Creating a new Test Settings

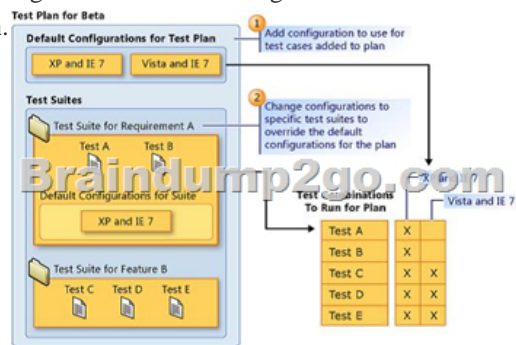
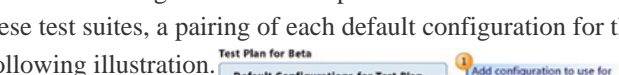


The built-in data adapters in MTM 2012 include:

- IntelliTrace: Used to collect run-time and exception information from the system under test that can be used by developers to speed up the time it takes to understand the cause of a problem.
- When we want to use the test settings we either assign it to the test plan or choose the test setting when we start a test run by selecting Run Options




**QUESTION 97**You plan to conduct a manual test for an ASP.NET website by using Microsoft Test Manager (MTM). You create a test plan named Release 1.0 by using Testing Center in MTM. You need to configure the Release 1.0 test plan so that all the test cases in the test plan will run against the following platforms:- Microsoft Windows 7 and Windows Internet Explorer 8 - Microsoft Windows Server 2008 and Windows Internet Explorer 8 What should you do? A. Create new test environments with the specified configuration settings and associate the newly created environment to the test plan by changing the automated test environment settings. B. Create new test configurations with the specified configuration settings and associate the newly created configuration to the test plan by changing the configuration settings. C. Create new test environments with the specified configuration settings and associate the newly created environment to the test plan by changing the manual test environment settings. D. Create new test environments with the specified configuration settings and associate the newly created environment to the test plan by changing both the manual and automated test environment settings. Answer: B Explanation: At any time when you are planning what to test, you can add test configurations and set them as the default configurations for your test plan. When you next add test cases to the test plan, a pairing of each default configuration with the test case is added to the test plan. When you run the tests from the test plan, these pairings called test points are shown and each can be run individually. Test results are saved for each test point. You can also override the default test configurations for the plan and set different default configurations for a specific test suite. When test cases are added to these test suites, a pairing of each default configuration for the test suite with the test case is added to the test plan as shown in the following illustration.



Reference: How to: Select Different Test Configurations For a Test Plan or a Test Suite QUESTION 98You create a set of test cases for a complex requirement.The test cases should be listed in a specific order.You need to configure a test suite and define the order of the test cases.Which type of test suite should you configure? A. Query-basedB. StaticC. Requirements-basedD.

Order-based Answer: BExplanation: Static test suites are like folders. A static test suite can contain both test cases and other suites. Choose Order to arrange the order in which tests will be run in a static test suite.Reference: Organizing Test Cases Using Test Suites QUESTION 99You are using Microsoft Test Manager (MTM).Your testing team is creating test cases for an application.You need to assign the state of the test suite that contains test cases that are unavailable to run.Which state should you assign? A. In Planning B. CompletedC. In DesignD. In Progress Answer: AExplanation: Use In Planning if you are not yet ready to run the tests linked to this requirement.Reference: How to: Add Requirements or User Stories to Your Test Plan QUESTION 100You are using Microsoft Test Manager (MTM).Your company no longer supports a particular configuration for the application under test.You need to ensure that the test configuration is unavailable as an option in a test plan.Which state should you assign to the test configuration? A. ClosedB. InactiveC. DisabledD. Idle Answer: BExplanation: When you have completed the tests in a test plan, set its state to Inactive. This prevents more tests from being run in this plan, but still allows the results of existing runs to be viewed. When the results are no longer required you can delete the test plan. Braindump2go Latest 70-497 Exam Dumps Released! 100% Real Questions - Dumps Qualification is the secret of Success! Prepare yourself to Face the 70-497 Exam with Real Exam Questions from Microsoft Official Exam Center, walk into the Testing Centre with confidence.

#### Microsoft Software Testing with Visual Studio 2012:



**Product Description Exam Number/Code: 70-497**

**Exam Number/Code: 70-497**

"Microsoft Software Testing with Visual Studio 2012", also known as 70-497, is a certification exam. With the complete collection of questions and answers assembled to take you through 106 Q&As to your 70-497 Exam preparation resources, you will cover every field and category in Microsoft MCIT, ensuring your successful Microsoft Certification.

**Questions and Answers : 106 Q&As**

Updated: Nov 2, 2015

~~\$129.99~~ **\$99.99**

[PDF DEMO](#)

[CHECK OUT](#)

**Free Demo Download**

Braindump2go offers free demo for 70-497 exam (Microsoft Software Testing with Visual Studio 2012). You can check out the interface, question quality and usability before you decide to buy it.

☒ **Printable PDF** ☒ **Premium VCE + VCE Simulator**

FREE DOWNLOAD: NEW UPDATED 70-497 PDF Dumps & 70-497 VCE Dumps from Braindump2go:  
<http://www.braindump2go.com/70-497.html> (106 Q&A)