

New Free 70-410 VCE Instant Download from Braindump2go 100% Pass Guaranteed (291-300)

MICROSOFT OFFICIAL: New Updated 70-410 Exam Questions from Braindump2go 70-410 pdf dumps and 70-410 vce dumps! Welcome to download the newest Braindump2go 70-410 vce&pdf dumps: <http://www.braindump2go.com/70-410.html> (471 Q&As) Important News: Microsoft 70-410 Exam Questions are been updated recently! Braindump2go offers the latest up-to-date 70-410 Dumps for free instant download which helps you pass 70-410 Exam in a short time! Our 70-410 Exam Dumps has two version: 70-410 PDF Dumps, 70-410 VCE Dumps! Choose one of them according to your own need! 100% New 70-410 Exam Questions from Microsoft Official Exam Center! 100% Pass Microsoft 70-410 Exam! Exam Code: 70-410 Exam Name: Installing and Configuring Windows Server 2012 Certification Provider: Microsoft Corresponding Certifications: MCSA, MCSA: Windows Server 2012, MCSE, MCSE: Desktop Infrastructure, MCSE: Private Cloud, MCSE: Server Infrastructure Keywords: 70-410 Dumps, 70-410 Exam Questions, 70-410 VCE, 70-410 VCE Free, 70-410 PDF, 70-410 Lab Manual PDF, 70-410 Practice Exams, 70-410 Practice Tests, 70-410 Installing and Configuring Windows Server 2012

Installing and Configuring Windows Server 2012 410



Product Description

Exam Number/Code: 70-410

"Installing and Configuring Windows Server 2012" is a Microsoft Certified Exam. Braindump2go has assembled the latest exam resources, questions and answers for your successful exam preparation.

Questions and Answers : 471 Q&As

Updated: Sep 03, 2015

~~\$429.99~~ **\$99.99**

[PDF DEMO](#)

[CHECK OUT](#)

☒ **Printable PDF**

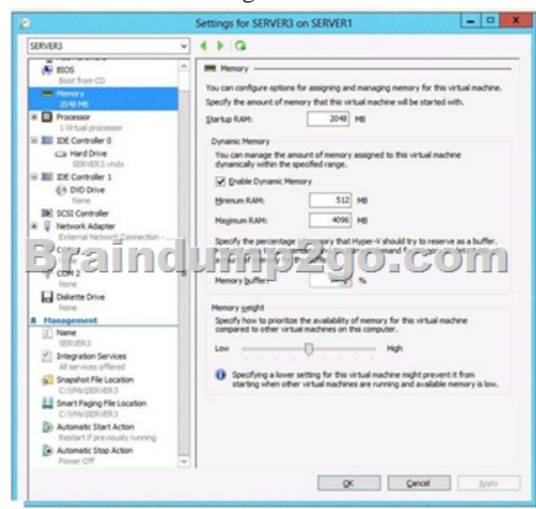
QUESTION 291 Your network contains an Active Directory forest named contoso.com. The forest contains a single domain. The domain contains two domain controllers named DC1 and DC2 that run Windows Server 2012 R2. The domain contains a user named User1 and a global security group named Group1. You need to ensure that User1 can manage the group membership of Group1. The solution must minimize the number of permissions assigned to User1. Which cmdlet should you run? A.

Add-AdPrincipalGroupMembershipB. Install- AddsDomainControllerC. Install- WindowsFeatureD. Install-AddsDomainE. Rename-AdObjectF. Set-AdAccountControlG. Set-AdGroupH. Set-User Answer: G Explanation:

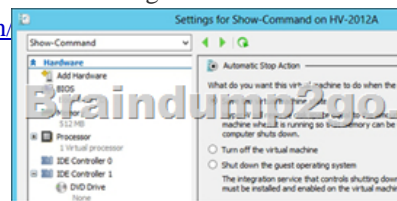
<http://technet.microsoft.com/en-us/library/ee617199.aspx> The Set-ADGroup cmdlet modifies the properties of an Active Directory group. You can modify commonly used property values by using the cmdlet parameters. **QUESTION 292** Your network contains an Active Directory forest named contoso.com. The forest contains a single domain. The domain contains two domain controllers named DC1 and DC2 that run Windows Server 2012 R2. The domain contains a user named User1 and a global security group named Group1. You need to prevent User1 from changing his password. The solution must minimize administrative effort. Which cmdlet should you run? A. Add-AdPrincipalGroupMembershipB. Install- AddsDomainControllerC. Install- WindowsFeatureD. Install-AddsDomainE. Rename-AdObjectF. Set-AdAccountControlG. Set-AdGroupH. Set-User Answer: F Explanation:

<http://technet.microsoft.com/en-us/library/ee617249.aspx> Set-ADAccountControl The Set-ADAccountControl cmdlet modifies the user account control (UAC) values for an Active Directory user or computer account. UAC values are represented by cmdlet parameters. CannotChangePassword Modifies the ability of an account to change its password. To disallow password change by the account set this to \$true.. This parameter changes the Boolean value of the CannotChangePassword property of an account. The following example shows how to specify the PasswordCannotChange parameter. -CannotChangePassword \$false **QUESTION 293** You have a Hyper-V host named Host1 that connects to a SAN by using a hardware Fibre Channel adapter. Host1 contains two virtual machines named VM1 and VM2. You need to provide VM1 with direct access to the SAN. VM2 must not require access to the SAN. Which two configurations should you perform? (Each correct answer presents part of the solution. Choose two.) A. On VM1, configure a Fibre Channel adapter.B. On Host1, configure a new virtual switch.C. On VM1, add a network adapter.D.

On Host1, configure a new Virtual Fibre Channel SAN.E. On Host1, modify the Hyper-V settings. Answer: A
Explanation: Step 1: D: Building a Virtual SAN
The process of setting up virtual Fibre Channel starts with building a virtual SAN. The easiest way to accomplish this is to open the Hyper-V Manager, right click on the listing for your Hyper-V server in the console tree, and then choose the Virtual SAN Manager command from the shortcut menu.
Step 2: A: Once you have created a virtual SAN, the next step in the process is to link a virtual machine to the virtual SAN. To do so, right click on the virtual machine for which you want to provide Fibre Channel connectivity and select the Settings command from the resulting shortcut menu. Next, select the Add Hardware container, as shown in the figure above, and then select the Fibre Channel Adapter option from the list of available hardware. Etc.
Note: * Virtual Fibre Channel for Hyper-V (also referred to as Synthetic Fibre Channel) provides VM guest operating systems with direct access to a Fibre Channel SAN by using a standard World Wide Name (WWN) associated with a virtual machine.
QUESTION 294
You have a server named Server1 that runs Windows Server 2012 R2. Server1 has the HyperV server role installed. Server1 has 8 GB of RAM. Server1 hosts five virtual machines that run Windows Server 2012 R2. The settings of a virtual machine named Server3 are configured as shown in the exhibit. (Click the Exhibit button.)



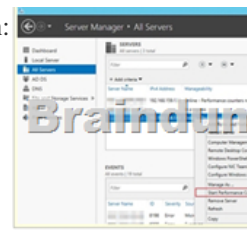
You need to ensure that when Server1 restarts, Server3 automatically resumes without intervention. The solution must prevent data loss. Which settings should you modify? A. BIOS B. Automatic Start Action C. Automatic Stop Action D. Integration Services
Answer: C
Explanation: <http://www.altaro.com/hyper-v/hyper-v-automatic-start-and-stop-action/>



QUESTION 295
You have a laptop named Computer1. Computer1 runs Windows 8 Enterprise. Computer1 has a wired network adapter and a wireless network adapter. Computer1 connects to a wireless network named Network1. For testing purposes, you install Windows Server 2012 R2 on Computer1 as a second operating system. You install the drivers for the wireless network adapter. You need to ensure that you can connect to Network1 from Windows Server 2012 R2. What should you do? A. From a local Group Policy object (GPO), configure the Wireless Network (IEEE 802.11) Policies settings. B. From a local Group Policy object (GPO), configure the settings of Windows Connection Manager. C. From Server Manager, install the Wireless LAN Service feature. D. Restart the WLAN AutoConfig service. Answer: C
Explanation:

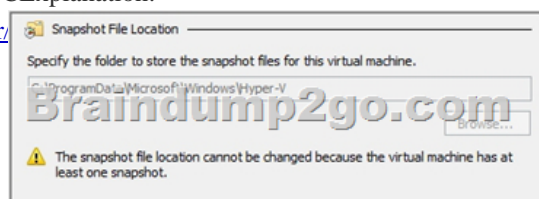
<http://technet.microsoft.com/en-us/library/hh994698.aspx>
The Wireless LAN service is a feature in Windows Server® 2012 R2 that you can use to enable the wireless WLAN AutoConfig service, and to configure the WLAN AutoConfig service for automatic startup. Once enabled, the WLAN AutoConfig service dynamically selects which wireless network the computer automatically connects to, and configures the necessary settings on the wireless network adapter. This includes automatically selecting and connecting to a more preferred wireless network when one becomes available.
To enable the Wireless LAN Service
In Server Manager Dashboard, click Manage, and then click Add Roles and Features. The Add Roles and Features Wizard opens. Click Next. In Select installation type, select Role-based or feature-based installation, and then click Next. In Select destination server, enable Select a server from the server pool, and in Server Pool, select the server for which you want to enable the Wireless LAN Service, and then click Next. In Select server roles, click Next. In Select Server features, in Features, select Wireless LAN Service, and then click Next.

click Next. QUESTION 296Your network contains an Active Directory domain named contoso.com. You install Windows Server 2012 on a new server named Server1 and you join Server1 to the domain. You need to ensure that you can view processor usage and memory usage information in Server Manager. What should you do? A. From Server Manager, click Configure Performance Alerts.B. From Server Manager, click Start Performance Counters.C. From Performance Monitor, start the System Performance Data Collector Set (DCS).D. From Performance Monitor, create a Data Collector Set (DCS). Answer: BExplanation:

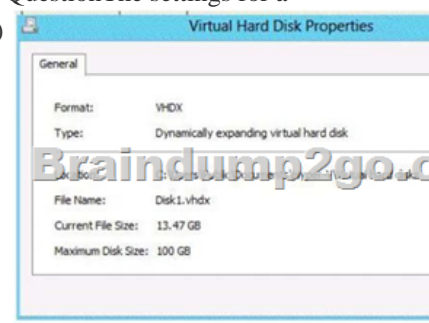


QUESTION 297Your network contains an Active Directory forest named contoso.com. The forest contains a single domain. The domain contains two domain controllers named DC1 and DC2 that run Windows Server 2012 R2. The domain contains a user named User1 and a global security group named Group1. You need to modify the SAM account name of Group1. Which cmdlet should you run? A. Add-AdPrincipalGroupMembershipB. Install AddsDomainControNerC. Install WindowsFeatureD. Install AddsDomainE. Rename-AdObjectF. Set-AdAccountControlG. Set-AdGroupH. Set-User Answer: GExplanation: The Rename-ADObject cmdlet renames an Active Directory object. This cmdlet sets the Name property of an Active Directory object that has an LDAP Display Name (ldapDisplayName) of ?name?. To modify the given name, surname and other name of a user, use the Set-ADUser cmdlet. To modify the Security Accounts Manager (SAM) account name of a user, computer, or group, use the Set-ADUser, Set-ADComputer or Set-ADGroup cmdlet. QUESTION 298You have a Hyper-V host named Server1 that runs Windows Server 2012 R2. Server1 hosts a virtual machine named VM1 that runs Windows Server 2012 R2. VM1 has several snapshots. You need to modify the snapshot file location of VM1. What should you do? A. Right-click VM1, and then click Export...B. Shut down VM1, and then modify the settings of VM1.C. Delete the existing snapshots, and then modify the settings of VM1.D. Pause VM1, and then modify the settings of VM1. Answer: CExplanation:

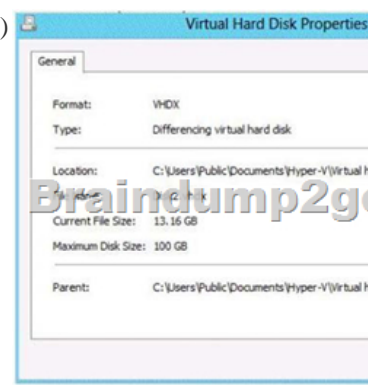
<http://doquent.wordpress.com/2012/09/02/relocating-a-hyper-v-vm-folder/>



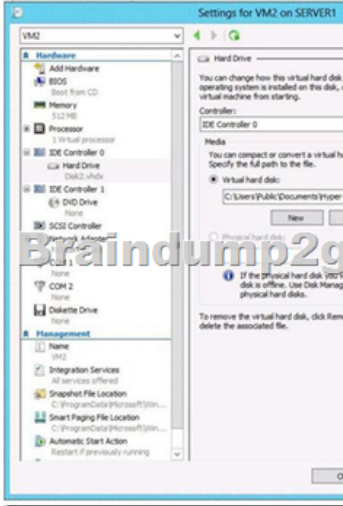
It is not A, watch this: <http://www.youtube.com/watch?v=YvwtpPQk0Cs> QUESTION 299Hotspot QuestionThe settings for a virtual machine named VM2 are configured as shown in the VM2 exhibit. (Click the Exhibit button.)



The settings for Disk1.vhdx are configured as shown in the Disk1.vhdx exhibit. (Click the Exhibit button.)



The settings for Disk2.vhdx are configured as shown in the Disk2.vhdx exhibit. (Click the Exhibit button.)



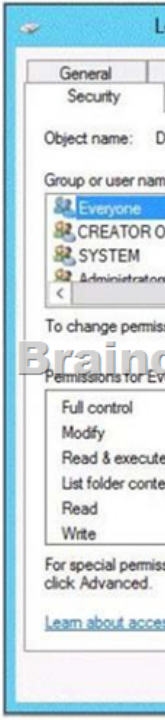
Select Yes if the statement can be shown to be true based on the available information; otherwise select No. Each correct selection is worth one point.

	Yes	No
You can compact Disk1.vhdx while VM2 is running.	<input type="radio"/>	<input type="radio"/>
You can compact Disk2.vhdx while VM2 is running.	<input type="radio"/>	<input type="radio"/>
You can convert Disk2.vhdx to a .vhd file while VM2 is running.	<input type="radio"/>	<input type="radio"/>

Answer:

	Yes	No
You can compact Disk1.vhdx while VM2 is running.	<input type="radio"/>	<input checked="" type="radio"/>
You can compact Disk2.vhdx while VM2 is running.	<input type="radio"/>	<input checked="" type="radio"/>
You can convert Disk2.vhdx to a .vhd file while VM2 is running.	<input type="radio"/>	<input checked="" type="radio"/>

QUESTION 300 You have a server named Server1 that runs Windows Server 2012 R2. A network technician installs a new disk on Server1 and creates a new volume. The properties of the new volume are shown in the exhibit. (Click the Exhibit button.)




You need to ensure that you can enable NTFS disk quotas for volume D. What should you do first? A. Install the File Server Resource Manager role service.B. Format volume D.C. Run the convert.exe command.D. Convert the disk to a dynamic disk.
Answer: BExplanation:

<http://blogs.technet.com/b/askpfplat/archive/2013/01/02/windows-server-2012-does-refs-replace-ntfs-when-should-i-use-it.aspx>

REFS to NTFS requires format not convert.exe Braindump2go Regular Updates of Microsoft 70-410 Preparation Materials Exam Dumps, with Accurate Answers, Keeps the Members One Step Ahead in the Real 70-410 Exam. Field Experts with more than 10 Years Experience in Certification Field work with us.

Installing and Configuring Windows Server 2012 R2 Exam: 70-410



Questions and Answers : 471 Q&As
Updated: Sep 03, 2015
~~\$429.99~~ **\$99.99**
[PDF DEMO](#)
[CHECK OUT](#)

Product Description Exam Number/Code: 70-410
Exam Number/Code: 70-410

"Installing and Configuring Windows Server 2012 R2 Exam", also known as 70-410 exam, is a Microsoft Certification. With the complete collection of questions and answers, Braindump2go has assembled to take you through 471 Q&As to your 70-410 Exam preparation. In the 70-410 exam resources, you will cover every field and category in Microsoft MCSA helping to ready you for your successful Microsoft Certification.

Free Demo Download

Braindump2go offers free demo for 70-410 exam (Installing and Configuring Windows Server 2012 R2 Exam). You can check out the interface, question quality and usability of our practice exams before you decide to buy it.

☒ **Printable PDF** ☒ **Premium VCE + VCE Simulator**

70-410 PDF Dumps & 70-410 VCE Dumps Full Version Download(471q): <http://www.braindump2go.com/70-410.html>