

## Microsoft New Released Exam: 70-662 Dumps Free Download From Braindump2go! (341-350)

**MICROSOFT NEWS: 70-662 Exam Questions has been Updated Today! Get Latest 70-662 VCE and 70-662 PDF Instantly!**

**Welcome to Download the Newest Braindump2go 70-662 VCE&70-662 PDF Dumps:**

<http://www.braindump2go.com/70-662.html> (507 Q&As) The 70-662 Exam Practice Questions and Answers are ideal for the aspiring candidates to grab exceptional grades in Microsoft 70-662 Exam! The 70-662 Questions and Answers are developed using the latest updated course content and all the answers are verified to ensure phenomenon preparation for the actual 70-662 Exam! Exam Code: 70-662 Exam Name TS: Microsoft Exchange Server 2010, Configuring Certification Provider: Microsoft Corresponding Certifications: MCITP, MCITP: Enterprise Messaging Administrator on Exchange 2010, MCTS, MCTS: Microsoft Exchange Server 2010, Configuring 70-662 Dumps, 70-662 PDF, 70-662 PDF eBook, 70-662 Braindump, 70-662 Study Guide, 70-662 Book, 70-662 Practice Test, 70-662 Dumps PDF, 70-662 VCE, 70-662 VCE Dumps, 70-662 Valid Dumps, 70-662 Exam Questions Free, 70-662 Dumps, 70-662 Free Dumps, 70-662 Questions and Answers Free, 70-662 Braindump PDF, 70-662 Braindump VCE, 70-662 Preparation

### TS: Microsoft Exchange Server 2010, Configuring: 70-662



Questions and Answers : 507 Q&As

Updated: Jan 02, 2016

~~\$429.99~~ **\$99.99**

PDF DEMO

**CHECK OUT**

**Product Description Exam Number/Code: 70-662**

**Exam Number/Code: 70-662**

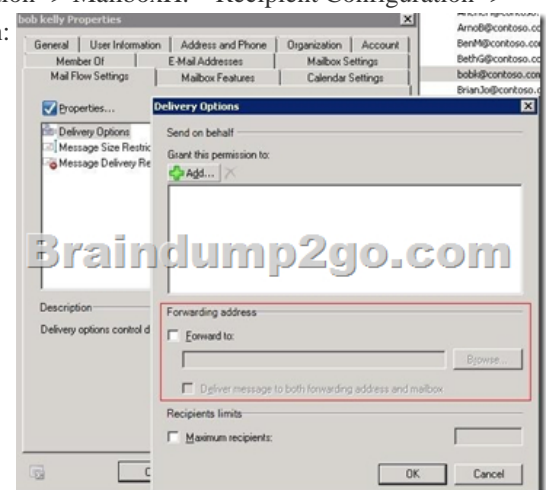
"TS: Microsoft Exchange Server 2010, Configuring", also known as 70-662 exam, is a Microsoft Certification. With the complete collection of questions and answers, Braindump2go has assembled to take you through 507 Q&As to your 70-662 Exam preparation. In the 70-662 exam resources, you will cover every field and category in Microsoft MCITP helping to ready you for your successful Microsoft Certification.

**Free Demo Download**

Braindump2go offers free demo for 70-662 exam (TS: Microsoft Exchange Server 2010, Configuring). You can check out the interface, question quality and usability of our practice exams before you decide to buy it.

☒ Printable PDF ☒ Premium VCE + VCE Simulator

QUESTION 341 Which option should you choose to configure User1's mailbox so that all messages that are sent to User1's mailbox are also delivered to the Compliance Mailbox? A. Organization Configuration -> Mailbox B. Organization Configuration -> Client Access C. Organization Configuration -> Hub Transport D. Server Configuration -> Mailbox E. Server Configuration -> Client Access F. Server Configuration -> Hub Transport G. Recipient Configuration -> Mailbox H. Recipient Configuration -> Client Access I. Recipient Configuration -> Hub Transport Answer: G Explanation:



QUESTION 342 What command would you use to block messages from servers that are known for sending spam? A. Test-IPBlockListProvider B. Set-IPBlockListProvider C. Add-IPBlockListEntry D. Set-IPAllowListProvider Answer: B Explanation: You use the Add-IPBlockListProvider, Set-IPBlockListProvider, and Remove-IPBlockListProvider cmdlets to manage the IP Block List Provider services you use in your organization. The following example adds a new IP Block List provider service

called "Contoso IP Block List Provider", and configures it to use bitmask matching for 127.0.0.1 (block messages from IP addresses that are on the block list): Add-IPBlockListProvider -Name "Contoso IP Block List Provider" ?LookupDomain "contoso.com" - BitMaskMatch 127.0.0.1 The following example configures the same IP Block List provider service to use a custom rejection response: Set-IPBlockListProvider "Contoso IP Block List Provider" -RejectionMessage "Your message was rejected because the IP address of the server sending your message is in the block list of contoso.com IP Block List Provider service" You use the Add-IPBlockListEntry and Remove-IPBlockListEntry cmdlets to manage the addresses in the IP Block list. You can specify individual IP addresses, IP subnets using the CIDR notation, or IP ranges. The following example adds the IP address 192.168.0.100 to the IP Block list. Add-IPBlockListEntry-IPAddress 192.168.0.100 QUESTION 343 You have an Exchange 2010 SP1 organization with the following configuration: Server1 roles - mailbox, hub transport Server2 roles - client access server Server1 holds the public folder database. Which command would you use first to remove public folder database? A. Set-MailboxDatabaseB. Remove-PublicFolderC. Remove-PublicFolderDatabaseD. Get-MailboxDatabase Answer: B Explanation: You have to remove all the public folders from a public folder database before you remove the database. Remove-PublicFolder -Identity "My Public Folder" -Recurse: \$True Then, before you remove the database you must make sure it is not the default public folder database for the mailbox database. If so, you must set another as default before removing it. Reference:

<http://technet.microsoft.com/en-us/library/aa997202.aspx><http://technet.microsoft.com/en-us/library/dd876883.aspx> QUESTION 344

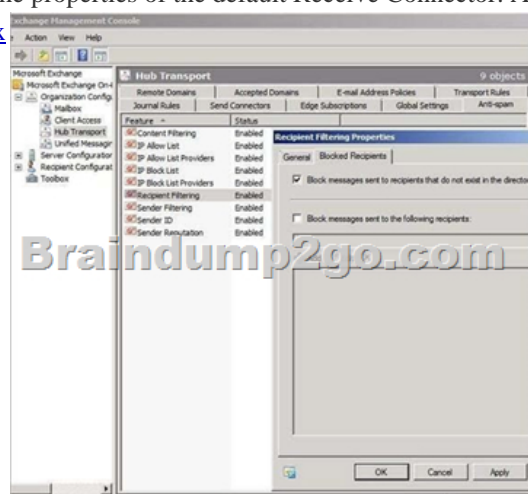
You deploy a Monitor Server srvApp1. You want to allow the server to send notification mails to an administrator through the relay domain. Which option should you use? A. hub transport ruleB. send connectorC. receive connectorD. edge subscriptionE. accepted domainF. remote domain Answer: C Explanation: We have a server that will need to send e-mails to an external administrator. We would have to build a receive connector for use by that server. Reference:

<http://exchangeserverpro.com/how-to-configure-a-relay-connector-for-exchange-server-2010> QUESTION 345 You need to ensure that 10 new room mailboxes automatically accept meeting requests. Which cmdlet should you run? A. SetCalendarNotificationB. SetCalendarProcessingC. SetMailboxAutoReplyConfigurationD. SetMailboxCalendarConfiguration Answer: B Explanation:

Set-CalendarProcessing -Identity "Conf 212"-AutomateProcessing AutoAccept-DeleteComments \$true-AddOrganizerToSubject \$true-AllowConflicts \$false<http://technet.microsoft.com/en-us/library/dd335046.aspx> QUESTION 346 You have an Exchange Server 2003 organization. You install a new Exchange Server 2010 server in the organization. You need to ensure that you can modify the default email address policy by using the Exchange Management Console (EMC). What should you do? A. Run the SetEmailAddressPolicy cmdletB. Run the UpdateEmailAddressPolicy cmdlet.C. From the Exchange System Manager, modify the properties of the default recipient policy.D. From the EMC, select the Email Address Policies tab, rightclick Default Policy, and then click Apply. Answer: A Explanation: When going from Exchange 2003 to Exchange 2010, you'll want to upgrade the default email address policy. To do so, you must run the following command: Set-EmailAddressPolicy "Default Policy" -

IncludedRecipients AllRecipients Once upgraded, you'll be able to use the EMC to manage it. Reference: <http://technet.microsoft.com/en-us/library/dd351283.aspx> QUESTION 347 Your company has an Exchange Server 2010 Hub Transport server named Hub1. Hub1 receives all email sent to the company from the Internet. You install the antis spam agents on Hub1. You need to ensure that Hub1 only accepts messages sent to email addresses listed in Active Directory. What should you do? A. Modify the properties of the Sender Filtering agent.B. Modify the properties of the Recipient Filtering agent.C. Modify the properties of the default Accepted Domain.D. Modify the properties of the default Receive Connector. Answer: B Explanation:

<http://technet.microsoft.com/en-us/library/bb123891.aspx>

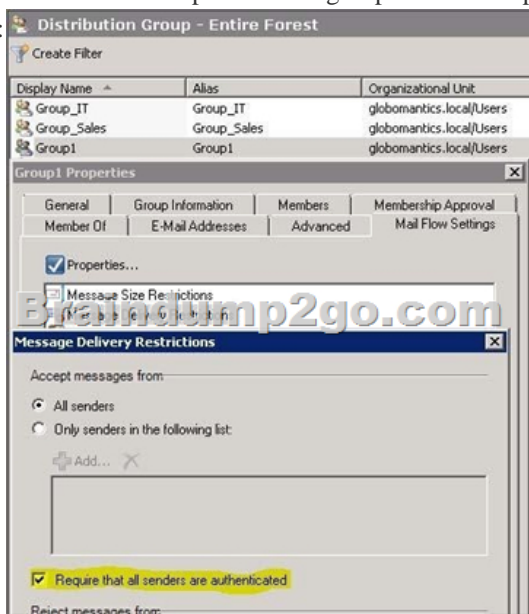


QUESTION 348 You have an Exchange Server 2010 Service Pack 1 (SP1) organization. The organization contains the servers configured as shown in the following table: The Mailbox servers are members of a database availability group (DAG) named DAG1. You need to configure DAG1 to use a static IP of 192.168.1.100. Which Windows PowerShell cmdlet should you run?

Server name	Server role
Server1	Client Access, Hub Transport
Server2	Client Access, Hub Transport
Server3	Mailbox
Server4	Mailbox
Server5	Edge Transport

A. Set-MailboxServer.B. Set-DatabaseAvailabilityGroup.C. New-DatabaseAvailabilityGroup.D. Add-MailboxDatabaseCopy.E. Add-DatabaseAvailabilityGroupServer.F. Set-MailboxDatabase.G. Set-ClientAccessServer.H. Set-ClientAccessArray.I. Set-PublicFolderDatabase.J. New-PublicFolderDatabase.K. Add-RoleGroupMember.L. Set-MailboxDatabaseCopy.M. New-MailboxDatabase. Answer: B Explanation: Set-DatabaseAvailabilityGroup -Identity DAG1 -DatabaseAvailabilityGroupIpAddresses 192.168.1.100 <http://technet.microsoft.com/en-us/library/dd297934.aspx> QUESTION 349

You have an Exchange organization named contoso.com. All servers in the organization have Exchange Server 2010 SP1 installed. The organization contains a mail-enabled domain local group name Group1. Users from outside the organization report that all email messages sent to group1@contoso.com generate a non-delivery report (NDR). You need to ensure that users from outside the organization can successfully send email to group1@contoso.com. What should you modify for Group1? A. The advanced settings.B. The mail flow settings.C. The group scope.D. The group type. Answer: B Explanation: By default the Message Delivery Restrictions, under the Mailflow options, are set to require that all senders to group mailboxes are authenticated locally by the server. This is not acceptable if the group will be accepting mail from external domains, so the following checkbox should be unticked:



QUESTION 350 You have an Exchange Server 2010 Service Pack 1 organization. The organization contains a Hub Transport server named Server1 and an Edge Transport server named Server2. All servers are configured to use an internal DNS server named DNS1 for host resolution. You configure an Edge Subscription from Server1 to Server2. You need to modify the delayed acknowledgment (ACK) setting of Server2. What should you do? A. From the Exchange Management Console (EMC), modify the properties of the accepted domain.B. From the Exchange Management Console (EMC), create a transport rule.C. From the Exchange Management Shell, run the Set-TransportServer cmdlet.D. From the Exchange Management Shell, run the Set-ReceiveConnector cmdlet.E. From the Exchange Management Console (EMC), disable the IP Block List feature.F. From the Exchange Management Shell, run the Set-TransportAgent cmdlet.G. From the Exchange Management Shell, run the Set-TransportConfig cmdlet.H. From the Exchange Management Console (EMC), modify the properties of the remote domain. Answer: D Explanation: <http://technet.microsoft.com/en-us/library/hh529935.aspx> Braindump2go is one of the Leading 70-662 Exam Preparation Material Providers Around the World! We Offer 100% Money Back Guarantee on All Products! Feel Free In Downloading Our New Released 70-662 Real Exam Questions!

## TS: Microsoft Exchange Server 2010, Configuring: 70-662



**Product Description Exam Number/Code: 70-662**

**Exam Number/Code: 70-662**

Questions and Answers : 507  
Q&As

Updated: Jan 02, 2016

~~\$429.99~~ **\$99.99**

PDF DEMO

**CHECK OUT**

"TS: Microsoft Exchange Server 2010, Configuring", also known as 70-662 exam, is a Microsoft Certification. With the complete collection of questions and answers, Braindump2go has assembled to take you through 507 Q&As to your 70-662 Exam preparation. In the 70-662 exam resources, you will cover every field and category in Microsoft MCITP helping to ready you for your successful Microsoft Certification.

### Free Demo Download

Braindump2go offers free demo for 70-662 exam (TS: Microsoft Exchange Server 2010, Configuring). You can check out the interface, question quality and usability of our practice exams before you decide to buy it.

☒ **Printable PDF** ☒ **Premium VCE + VCE Simulator**

FREE DOWNLOAD: NEW UPDATED 70-662 PDF Dumps & 70-662 VCE Dumps from Braindump2go:  
<http://www.braindump2go.com/70-662.html> 507 Q&As)