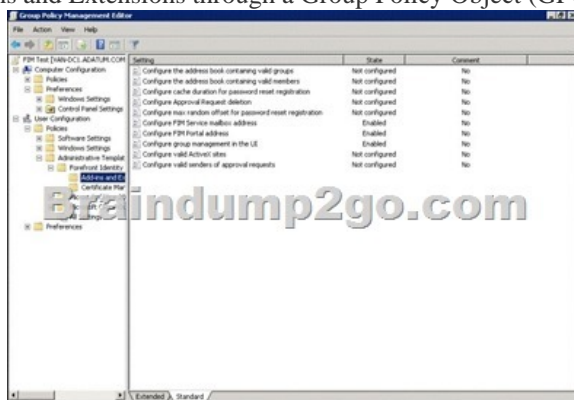


Latest Braindump2go Microsoft 70-158 Exam Dumps In VCE Format (1-10)

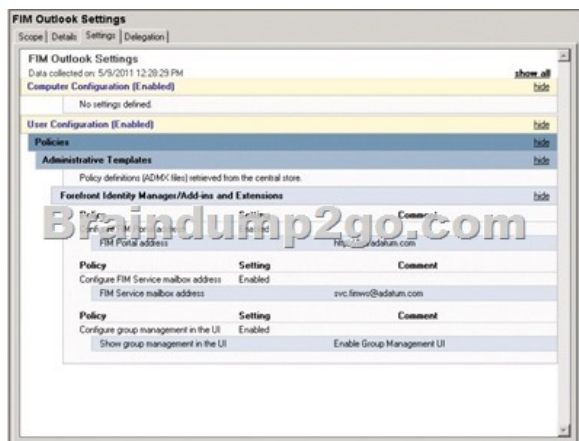
Get Prepared with fully updated Microsoft 70-158 Real Exam Questions and Accurate Answers for 70-158 Exam Dumps. Braindump2go IT experts review the 70-158 newly added questions and suggest Correct Microsoft 70-158 Exam Questions Answers in Real Time. 100% Pass easily! Vendor: MicrosoftExam Code: 70-158Exam Name: Forefront Identity Manager 2010, ConfiguringKeywords: 70-158 Exam Dumps,70-158 Practice Tests,70-158 Practice Exams,70-158 Exam Questions,70-158 PDF,70-158 VCE Free,70-158 Book,70-158 E-Book,70-158 Study Guide,70-158 Braindump,70-158 Prep Guide

Compared Before Buyi	
Pass4sure	100
92 Q&As – Practice	102 Q
\$109.99	\$99.9
No Discount	Coup

QUESTION 1 You administer a Forefront Identity Management (FIM) 2010 server in your company network. You install the FIM Service and Portal Language Pack. A new office is opened in Japan. Employees in the Japan office report that regional settings in only English, Chinese (Simplified), and Chinese (Traditional) are available in the FIM Portal. You need to ensure that regional settings in only English and Japanese are available for the Japan office in the FIM Portal. What should you do? A. Load a backup of the FIM Service database made prior to the installation of the FIM Service and Portal Language Pack. Rerun the setup for the FIM Service and Portal Language Pack. B. Load a backup of the FIM Synchronization Service database made prior to the installation of the FIM Service and Portal Language Pack. Rerun the setup for the FIM Service and Portal Language Pack. C. From the FIM Splash Screen, download and run Setup.exe for the FIM Service and Portal Language Pack. D. On the Custom Setup page, select the appropriate languages that must be installed. Answer: A QUESTION 2 Your company network includes Forefront Identity Manager (FIM) 2010. You manage the FIM 2010 Add-ins and Extensions through a Group Policy Object (GPO) configured according to the two exhibits. (Click the Exhibit button.)



(Click the Exhibit button.)



You need to configure the GPO policy settings to meet the following requirements: - Users must be able to register for Password

Reset and Registration. - The Approve and Reject buttons must appear in the Microsoft Outlook client and approvals must be performed by using the button. What should you do? (Choose all that apply.) A. Add fim.adatum.com to the Configure valid ActiveX sites policy setting. B. Add the group address book to the Configure the address book containing valid groups policy setting. C. Add the member address book to the Configure the address book containing valid members policy setting. D. Add the address or addresses of FIM administrators to the Configure valid senders of approval requests policy setting. E. Add the address or addresses of mailboxes that host the FIM web service to the Configure valid senders of approval requests policy setting. Answer: AE

QUESTION 3 Your company network includes Forefront Identity Manager (FIM) 2010. You configure the FIM Portal to use detailed error pages. A backup of FIM is performed daily. After a restore of the FIM Service, you discover that the detailed error pages are not displayed for the FIM Portal. You need to ensure that when you perform a restore of the FIM Service, the detailed error pages are displayed. What should you do? A. Include the web.config file in the daily backup of FIM. B. From an elevated command prompt, run iisreset.exe. C. From the FIM Portal, edit the Portal Configuration Extended Attributes page. D. Edit the web.config file and include `<customErrors mode="On"/>` in the file. Answer: A

QUESTION 4 Drag and Drop Question Your company network includes Forefront Identity Manager (FIM) 2010 and Microsoft SQL Server 2008. A backup of FIM Synchronization Service is performed daily. The FIM Synchronization Service fails. You restore the FIM 2010 database to the SQL server. You need to restore the FIM Synchronization Service. What should you do? (To answer, move the appropriate actions from the list of actions to the answer area and arrange them in the correct order.)



Answer:



QUESTION 5 You administer a Forefront Identity Management (FIM) 2010 server in your company network. The server that runs the FIM Portal fails. You begin the restore process. However, you receive an error when you stop the SQL Server Agent service. You need to be able to continue the restore process. What should you do? A. Run iisreset.exe. B. Close the FIM Portal. C. Stop the FIM Synchronization service. D. Ensure that no stored procedure runs in FIM. Answer: D

QUESTION 6 You install a Forefront Identity Management (FIM) 2010 server on a member server of an Active Directory Domain Services (AD DS) domain. You configure synchronization between the domain and FIM server. A user named User1 must modify other users' attributes and Management Policy Rules (MPRs) settings through the FIM Portal. You need to delegate the required permissions to User1. What should you do? A. Create and configure a new authorization workflow. B. Add the user account of User1 to the Administrators set. C. Add the user account of User1 to the FIMSyncAdmins group in the domain. D. Add the user account of User1 to the local Administrators group on the FIM server. Answer: B

QUESTION 7 You administer a Forefront Identity Management (FIM) 2010 server in your company network. All user accounts are members of an Active Directory Domain Services (AD DS) domain. You configure user accounts synchronization between the FIM server and domain. You provide read access to the domain users to the FIM Portal. You need to ensure that users can update only their own personal profile through the FIM Portal. What should you do? A. Add All People to the Specific Set of Requestors list of the User management: User can read selected attributes of their own Management Policy Rule. B. Create a new Request Management Policy Rule (MPR). Select the Modify a single-valued attribute operation in the MPR. Add All People to the Specific Set of Requestors list. Add All Requests to both Target Resource Definition lists. C. Create a new Request Management Policy Rule (MPR). Select the Modify a single-valued attribute operation in the MPR. Add Resource ID to the Requestors Relative to Resource list. Add All People to both Target Resource Definition lists. D. Copy

settings of the User management: User can read selected attributes of their own Management Policy Rule (MPR) as a new MPR. Select the Modify a single-valued attribute operation in the MPR. Add All People to both Target Resource Definition lists. Answer: C

QUESTION 8 You administer a Forefront Identity Management (FIM) 2010 server in your company network. All users in the network are members of an Active Directory domain. You configure user accounts synchronization between the FIM server and domain. You need to ensure that service desk personnel can modify properties of domain user accounts by using the FIM Portal. What should you do? (Each correct answer presents part of the solution. Choose all that apply.)

- A. Create a new set for the user accounts of service desk personnel.
- B. Create and configure a new Management Policy Rule.
- C. Add a set to a Management Policy Rule.
- D. Add a workflow to a Management Policy Rule.
- E. Create a new authorization workflow.
- F. Create a new authentication workflow.

Answer: ABC

QUESTION 9 Your company network uses Forefront Identity Manager (FIM) 2010 to synchronize user accounts in an Active Directory Domain Services (AD DS) domain. You are implementing Password Change Notification Service (PCNS). You need to configure the AD Management Agent (AD MA) for password synchronization with PCNS. You also need to ensure that the HR Data MA receives password change notifications. What should you do? (Choose all that apply.)

- A. Select the .dll file of the HR MA extension as the extension name.
- B. Select the .dll file of the metaverse extension as the extension name.
- C. Enable Password Management in the extensions of the HR Data MA.
- D. Set the Password Synchronization target MA to HR Data in the AD MA.
- E. Enable password synchronization in Synchronization Service Manager.
- F. Create the HR Data MA import attribute flow for the resetPassword metaverse attribute.
- G. Configure the Directory Partition of the AD MA to Enable this partition as a password synchronization source.

Answer: ACDEG

QUESTION 10 You use Forefront Identity Manager (FIM) 2010 in your company network. After you perform the migration of FIM from the test environment to the production environment, you discover that requests for custom workflows fail. You need to ensure that custom workflows perform properly in the production environment. What should you do?

- A. Enable firewall access for Port 5725.
- B. Delete custom DLLs in the production environment.
- C. Implement the IActivitySettingsPart interface in Microsoft Visual Studio.
- D. Move custom DLLs from the test environment to the production environment.
- E. Run the CommitChanges.ps1 PowerShell script in the production environment.

Answer: D

All 102 Microsoft 70-158 Exam Dumps Questions are the New Checked and Updated! In recent years, the 70-158 certification has become a global standard for many successful IT companies. Looking to become a certified Microsoft professional? Download Braindump2go 2015 Latest Released 70-158 Exam Dumps Full Version and Pass 70-158 100%!

Compared Bef
Pass4sure
92 Q&As – Practice
\$109.99
No Discount

<http://www.braindump2go.com/70-158.html>