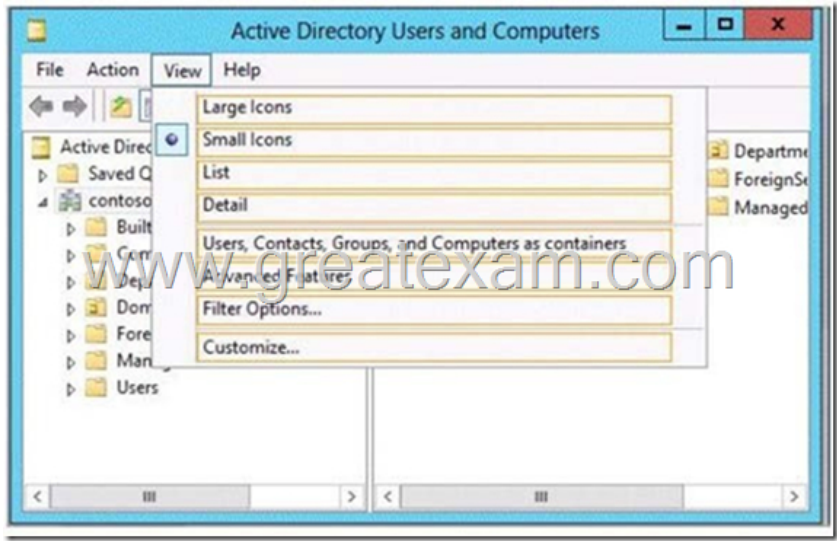
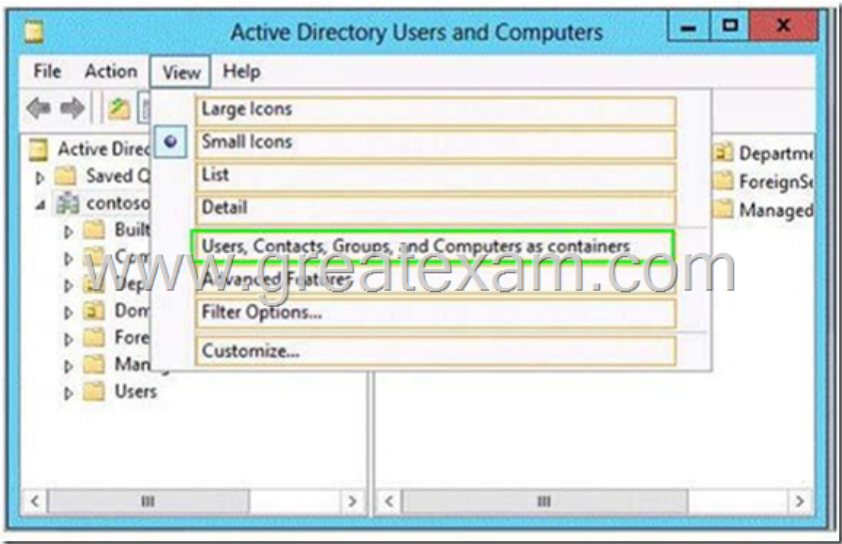


Free Sharing Of Greatexam Latest Microsoft 70-410 VCE And PDF Dumps(301-310)

[Free Share Of Greatexam 70-410 Exam Dumps.] The Microsoft 70-410 questions and answers from Greatexam is the most reliable guide for Microsoft exams. We offer the latest 70-410 PDF and VCE dumps with new version VCE player for free download, and the newest 70-410 practice tests ensure your exam 100% pass. A large number of successful candidates have shown a lot of faith in our 70-410 PDF dumps. If you want pass the Microsoft certificate exam, please choose Greatexam. QUESTION 301Hotspot QuestionYour network contains an Active Directory domain named contoso.com. The domain contains a print server named Print1 that runs Windows Server 2012 R2. Print1 has 50 shared printers. Each printer is listed in Active Directory. From Active Directory Users and Computers, you browse to Print1 and you discover that the 50 printers are not visible. You need to ensure that you can view the printer objects in Active Directory Users and Computers. Which option should you select? To answer, select the appropriate option in the answer area.



Answer:



QUESTION 302You have a file server named File1 that runs Windows Server 2012 R2. File1 contains a shared folder named Share1. Share1 contains an Application named SalesApp1.exe. The NTFS permissions for Share1 are shown in the following table.

Group
Administrators
Domain Users

The members of L_Sales discover that they cannot add files to Share1. Domain users can run SalesApp1.exe successfully. You need to ensure that the members of L_Sales can add files to Share1.What should you do? A. Add the Domain Users group to

L_Sales.B. Add L_Sales to the Domain Users group.C. Edit the Share permissions.D. Edit the NTFS permissions. Answer: D
QUESTION 303Hotspot QuestionYou have a file server named Server1 that runs Windows Server 2012 R2. Server1 contains a folder named Folder1.

Group name	Folder permission	Share permission
Group1	Read and Write	Full Control
Group2	Read	Read
Group3	Read & Execute	Change

A user named User1 is a member of Group1 and Group2. A user named User2 is a member of Group2 and Group3. You need to identify which actions the users can perform when they access the files in Share1. What should you identify? To answer, select the appropriate actions for each user in the answer area.

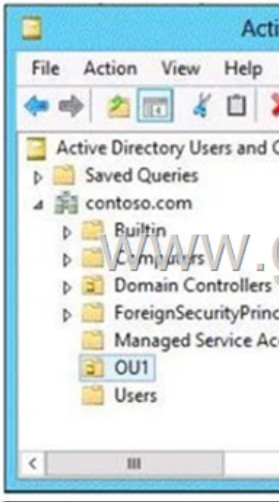
Actions	User1	User2
Read the files.	<input type="checkbox"/>	<input type="checkbox"/>
Edit the contents of the files.	<input type="checkbox"/>	<input type="checkbox"/>
Delete files created by other users.	<input type="checkbox"/>	<input type="checkbox"/>
Modify the permissions on the files.	<input type="checkbox"/>	<input type="checkbox"/>
Run executable files.	<input type="checkbox"/>	<input type="checkbox"/>

Answer:

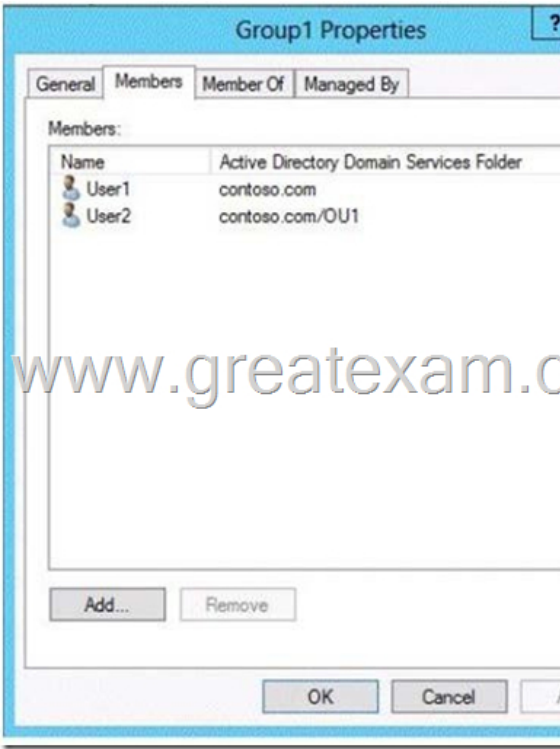
Actions	User1	User2
Read the files.	<input checked="" type="checkbox"/>	<input checked="" type="checkbox"/>
Edit the contents of the files.	<input checked="" type="checkbox"/>	<input type="checkbox"/>
Delete files created by other users.	<input type="checkbox"/>	<input type="checkbox"/>
Modify the permissions on the files.	<input type="checkbox"/>	<input type="checkbox"/>
Run executable files.	<input type="checkbox"/>	<input checked="" type="checkbox"/>

QUESTION 304Your network contains an Active Directory domain named contoso.com. The domain contains two servers named Server1 and Server2 that run Windows Server 2012 R2. Server1 has the Group Policy Management feature installed. Server2 has the Print and Document Services server role installed. On Server2, you open Print Management and you deploy a printer named Printer1 by using a Group Policy object (GPO) named GPO1. When you open GPO1 on Server1, you discover that the Deployed Printers node does not appear. You need to view the Deployed Printers node in GPO1. What should you do? A. On Server1, modify the Group Policy filtering options of GPO1.B. On a domain controller, create a Group Policy central store.C. On Server2, install the Group Policy Management feature.D. On Server1, configure the security filtering of GPO1. Answer: C
QUESTION 305Your network contains an Active Directory domain named contoso.com.All of the AppLocker policy settings for the member servers are configured in a Group Policy object (GPO) named GPO1. A member server named Server1 runs Windows Server 2012 R2. On Server1, you test a new set of AppLocker policy settings by using a local computer policy. You need to merge the local AppLocker policy settings from Server1 into the AppLocker policy settings of GPO1. What should you do? A. From Local Group Policy Editor on Server1, exportan .xml file. Import the .xml file by using Group Policy Management Editor.B. From Local Group Policy Editor on Server1, exportan .inf file. Import the .inf file by using Group Policy Management Editor.C. From Server1, run the Set-AppLockerPolicy cmdlet.D. From Server1, run the New-AppLockerPolicy cmdlet. Answer: C
QUESTION 306Your network contains an Active Directory domain named contoso.com. You have a Group Policy object (GPO) named GP1 that is linked to the domain. GP1 contains a software restriction policy that blocks an Application named App1. You have a workgroup computer named

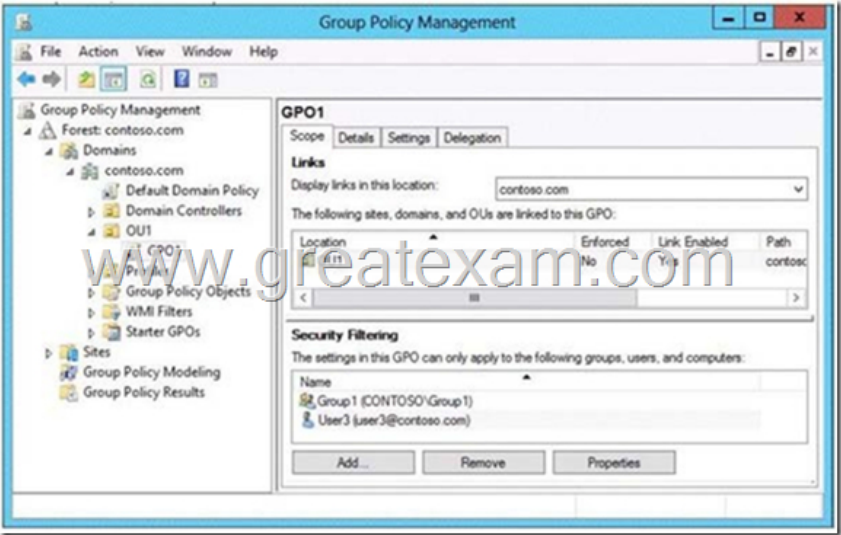
Computer1 that runs Windows 8. A local Group Policy on Computer1 contains an Application control policy that allows App1. You join Computer1 to the domain. You need to prevent App1 from running on Computer1.What should you do? A. From Group Policy Management, add an Application control policy to GP1.B. From Group Policy Management, enable the Enforced option on GP1.C. In the local Group Policy of Computer1, configure a software restriction policy.D. From Computer1, run gpupdate /force. Answer: A QUESTION 307Your network contains an Active Directory domain named contoso.com. The domain contains an Application server named Server1. Server1 runs Windows Server 2012 R2. Server1 is configured as an FTP server. Client computers use an FTP Application named App1.exe. App1.exe uses TCP port 21 as the control port and dynamically requests a data port. On Server1, you create a firewall rule to allow connections on TCP port 21. You need to configure Server1 to support the client connections from App1.exe. What should you do? A. Run netsh firewall addportopening TCP 21 dynamicftp.B. Create a tunnel connection security rule.C. Create an outbound firewall rule to allow App1.exe.D. Run netshadvfirewall set global statefulftp enable. Answer: D QUESTION 308Hotspot QuestionYour network contains an Active Directory domain named contoso.com. The domain contains an organizational unit (OU) named OU1 as shown in the OU1 exhibit. (Click the Exhibit button.)



The membership of Group1 is shown in the Group1 exhibit. (Click the Exhibit button.)



You configure GPO1 to prohibit access to Control Panel. GPO1 is linked to OU1 as shown in the GPO1 exhibit. (Click the Exhibit button.)



Select Yes if the statement can be shown to be true based on the available information; otherwise select No. Each correct selection is worth one point.

	Yes	No
User1 can access Control Panel.	<input type="radio"/>	<input type="radio"/>
User2 can access Control Panel.	<input type="radio"/>	<input type="radio"/>
User3 can access Control Panel.	<input type="radio"/>	<input type="radio"/>
User4 can access Control Panel.	<input type="radio"/>	<input type="radio"/>

Answer:

	Yes	No
User1 can access Control Panel.	<input checked="" type="radio"/>	<input type="radio"/>
User2 can access Control Panel.	<input type="radio"/>	<input checked="" type="radio"/>
User3 can access Control Panel.	<input checked="" type="radio"/>	<input type="radio"/>
User4 can access Control Panel.	<input checked="" type="radio"/>	<input type="radio"/>

QUESTION 309Your company has a main office and four branch offices. The main office contains a server named Server1 that runs Windows Server 2012 R2. The IP configuration of each office is configured as shown in the following table.

Office name	Network
Main	172.16.0.0/24
Branch1	192.168.1.0/24
Branch2	192.168.1.0/24
Branch3	192.168.1.0/24
Branch4	192.168.1.0/24

You need to add a single static route on Server1 to ensure that Server1 can communicate with the hosts on all of the subnets. Which command should you run? A. route.exe add -p 192.168.0.0 mask 255.255.248.0 172.31.255.254 B. route.exe add -p 192.168.12.0 mask 255.255.252.0 172.31.255.254 C. route.exe add -p 192.168.8.0 mask 255.255.252.0 172.31.255.254 D. route.exe add -p 192.168.12.0 mask 255.255.255.0 172.31.255.254 Answer: B

QUESTION 310 You work as an administrator at L2P.com. The L2P.com network consists of a single domain named L2P.com. All servers in the L2P.com domain, including domain controllers, have Windows Server 2012 R2 installed. You have created and linked a new Group Policy object (GPO) to an organizational unit (OU), named L2PServ, which host the computer accounts for servers in the L2P.com domain. You have been tasked with adding a group to a local group on all servers in the L2P.com domain. This group should not, however, be removed from the local group. Which of the following actions should you take? A. You should consider adding a restricted group. B. You should consider adding a global group. C. You should consider adding a user group. D. You should consider adding a server group. Answer: A

If you want to prepare for 70-410 exam in shortest time, with minimum effort but for most effective result, you can use Greatexam 70-410 Practice Test which simulates the actual testing environment and allows you to focus on various sections of 70-410 Exam. Our candidates walk into the testing room as confident as a Certification Administrator. So you can pass the exam without any question. <http://www.greatexam.com/70-410-exam-questions.html>