

Free Download Of Greatexam Latest Microsoft 70-410 VCE And PDF Dumps(191-200)

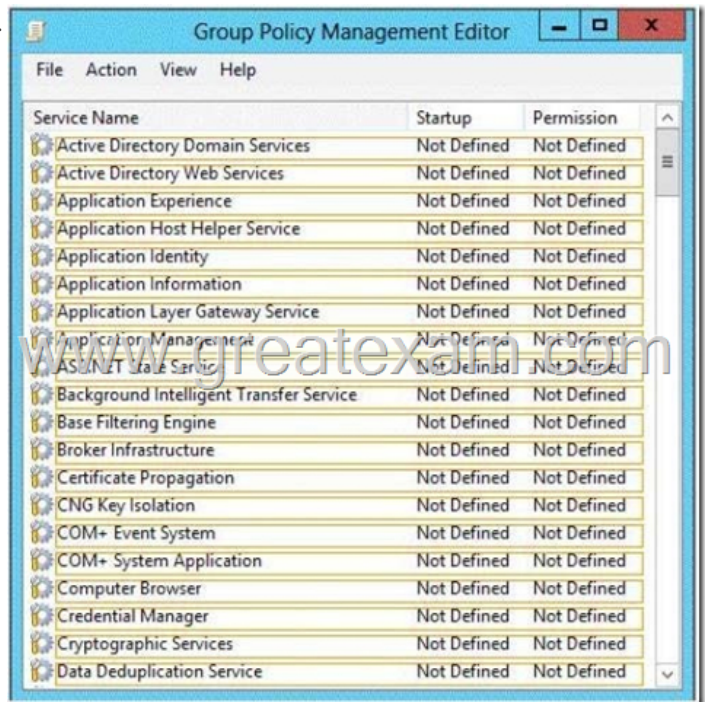
[How to 100% pass 70-410 exam?] Good news, Greatexam has updated the 70-410 exam preparation material. With all the questions and answers in your hands, you will pass the Microsoft 70-410 exam easily. If you want to get more 70-410 exam preparation material, you can download the free 70-410 brain dumps in PDF files on Greatexam. It would be great help for your exam. All the 70-410 dumps are updated and cover every aspect of the examination. Welcome to choose.

QUESTION 191 You have a new server named Server1 that runs Windows Server 2012 R2. Server1 has two dual-core processors and 32 GB of RAM. You install the Hyper-V server role on Server1. You create two virtual machines on Server1 that each have 8 GB of memory. You need to minimize the amount of time it takes for both virtual machines to access memory. What should you configure on each virtual machine?

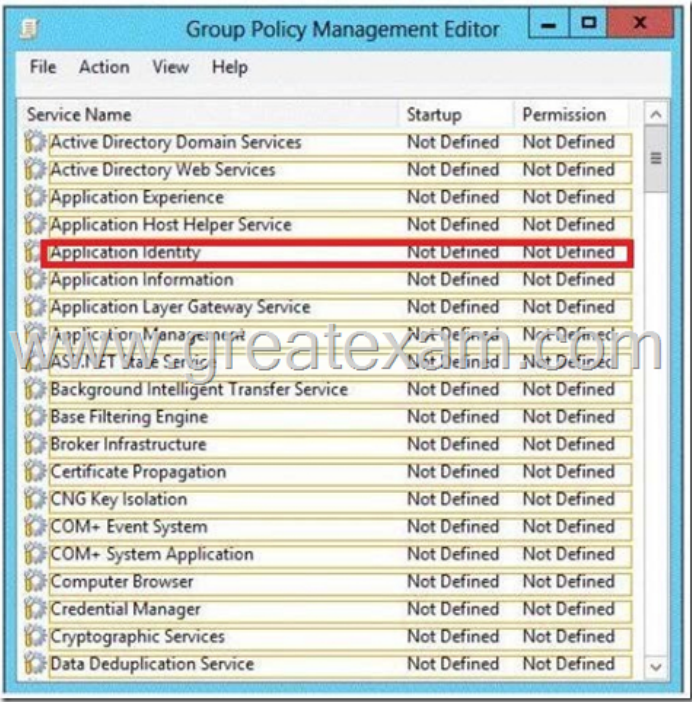
A. Resource control
B. Dynamic Memory
C. NUMA topology
D. Memory weight

Answer: C
Explanation: Windows Server 2012 introduced support for projecting a virtual NUMA topology into Hyper-V virtual machines. This capability can help improve the performance of workloads running on virtual machines that are configured with large amounts of memory.

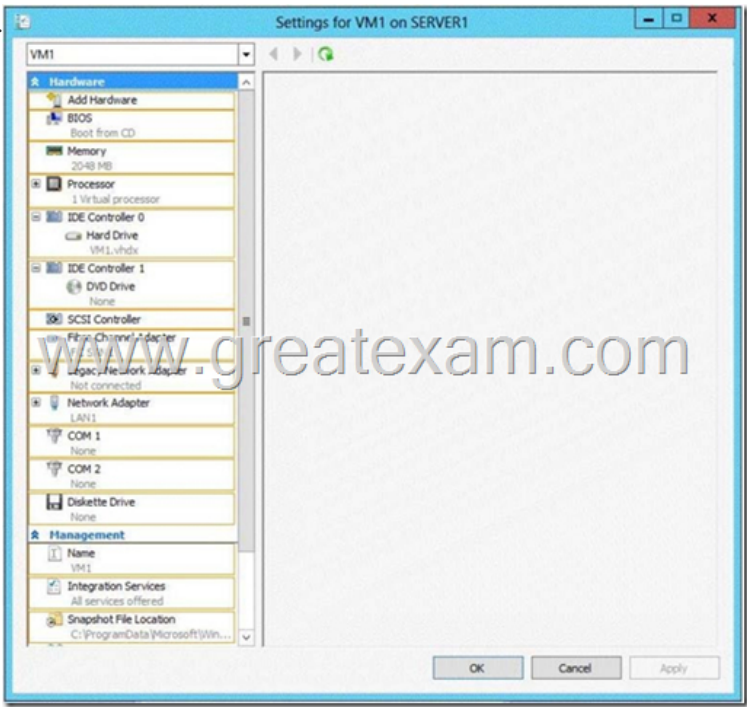
QUESTION 192 Hotspot Question Your network contains an Active Directory domain named contoso.com. Domain controllers run either Windows Server 2008 R2 or Windows Server 2012 R2. All client computers run Windows 8. All computer accounts are located in an organizational unit (OU) named OU1. You create a Group Policy object (GPO) that contains several AppLocker rules. You link the GPO to OU1. You need to ensure that the AppLocker rules apply to all of the client computers. What should you configure in the GPO? To answer, select the appropriate service in the answer area.



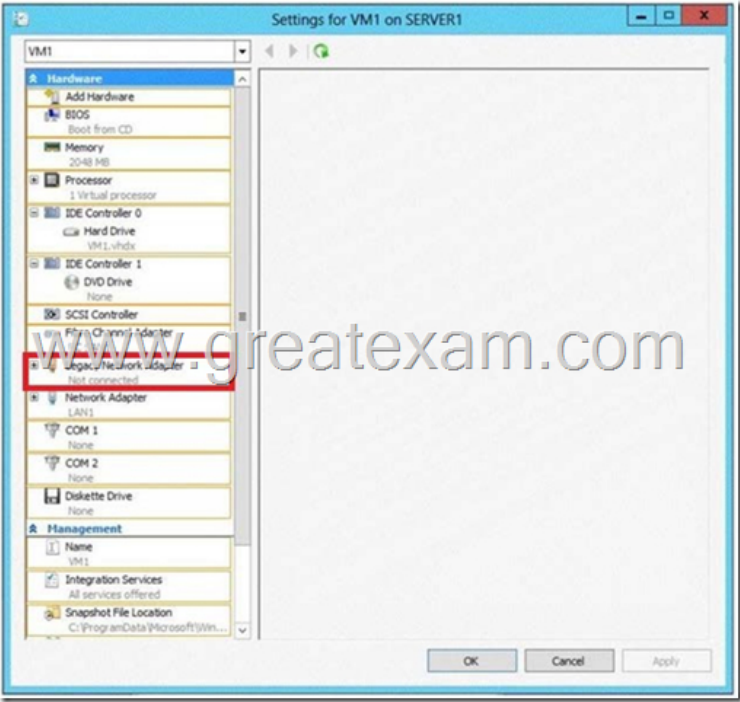
Answer:



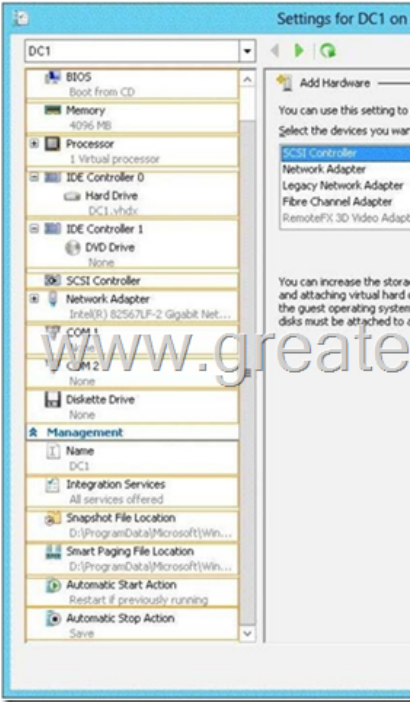
QUESTION 193Hotspot QuestionYour network contains an Active Directory domain named contoso.com. Technicians use Windows Deployment Services (WDS) to deploy Windows Server 2012 R2. The network contains a server named Server1 that runs Windows Server 2012 R2. Server1 has the Hyper-V server role installed. You need to ensure that you can use WDS to deploy Windows Server 2012 R2 to a virtual machine named VM1.Which settings should you configure?To answer, select the appropriate settings in the answer area.



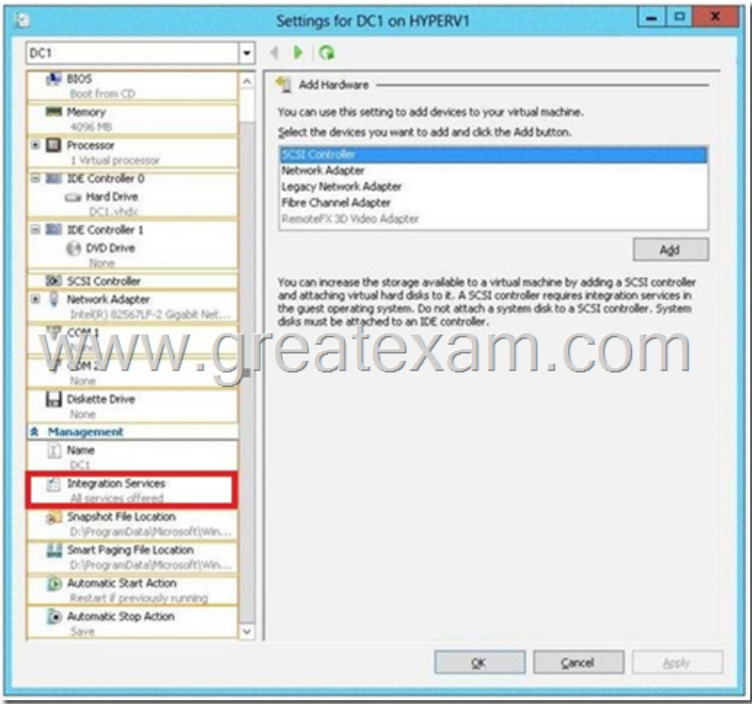
Answer:



QUESTION 194Hotspot QuestionYour network contains an Active Directory domain named contoso.com. The domain contains a member server named Hyperv1 and a domain controller named DC1. Hyperv1 has the Hyper-V server role installed. DC1 is a virtual machine on Hyperv1. Users report that the time on their client computer is incorrect. You log on to DC1 and verify that the time services are configured correctly. You need to prevent time conflicts between the time provided by DC1 and other potential time sources. What should you configure? To answer, select the appropriate object in the answer area.



Answer:



QUESTION 195 You perform a Server Core Installation of Windows Server 2012 R2 on a server named Server1. You need to add a graphical user interface (GUI) to Server1. Which tool should you use? A. the `dism.exe` command B. the `Add-WindowsFeature` cmdlet C. the `imagex.exe` command D. the `setup.exe` command E. the `ocsetup.exe` command F. the `Add-WindowsPackage` cmdlet G. the `Install-Module` cmdlet H. the `Install-RoleService` cmdlet Answer: AB

QUESTION 196 You have a server named Server1 that runs Windows Server 2012 R2. Server1 has the Hyper-V server role installed. You need to configure storage for a virtual machine to meet the following requirements:- Support up to 3 TB of data on a single hard disk.- Allocate disk space as needed.- Use a portable storage format. What should you configure? A. A pass-through disk B. A fixed-size VHDC. C. A dynamically expanding VHDD. D. A fixed-size VHDXE. E. A dynamically expanding VHDX Answer: EE

Explanation: <http://technet.microsoft.com/en-us/library/hh831446.aspx> Support for virtual hard disk storage capacity of up to 64 TB. vhd max is 2TB

QUESTION 197 Your network contains an Active Directory domain named contoso.com. All user accounts are in an organizational unit (OU) named Employees. You create a Group Policy object (GPO) named GP1. You link GP1 to the Employees OU. You need to ensure that GP1 does not apply to the members of a group named Managers. What should you configure? A. The Security settings of Employees B. The WMI filter for GP1 C. The Block Inheritance option for Employees D. The Security settings of GP1 Answer: D

QUESTION 198 You have a virtual machine named VM1. You install Windows Server 2012 R2 on VM1. You plan to use VM1 as an image that will be distributed to sales users to demonstrate the features of a custom application. The custom application only requires the Web Server (IIS) server role to be installed. You need to ensure that the VHD file for VM1 only contains the required Windows Server 2012 R2 source files. Which tool should you use? A. `dism.exe` B. `ocsetup.exe` C. `imagex.exe` D. `servermanagercmd.exe` Answer: A

QUESTION 199 Your network contains an Active Directory domain named contoso.com. The domain contains a server named Server1. Server1 runs Windows Server 2012 R2 and has the Hyper-V server role installed. On Server1, you create and start a virtual machine named VM1. VM1 is configured as shown in the following table.

Setting
Minimum RAM
Maximum RAM
Disk type
Disk size

You plan to create a snapshot of VM1. You need to recommend a solution to minimize the amount of disk space used for the snapshot of VM1. What should you do before you create the snapshot? A. Run the `Stop-VM` cmdlet. B. Run the `Convert-VHD` cmdlet. C. Decrease the Maximum RAM. D. Decrease the Minimum RAM. Answer: A

QUESTION 200 Your network contains an Active Directory domain named contoso.com. The domain contains a file server named Server1 that runs Windows Server 2012 R2. Server1 contains a shared folder named Share1. Share1 contains the home folder of each user. All users have the necessary

permissions to access only their home folder. The users report that when they access Share1, they can see the home folders of all the users. You need to ensure that the users see only their home folder when they access Share1. What should you do from Server1? A. From Windows Explorer, modify the properties of the volume that contains Share1.B. From Server Manager, modify the properties of the volume that contains Share1.C. From Server Manager, modify the properties of Share1.D. From Windows Explorer, modify the properties of Share1. Answer: C If you want to prepare for 70-410 exam in shortest time, with minimum effort but for most effective result, you can use Greatexam 70-410 Practice Test which simulates the actual testing environment and allows you to focus on various sections of 70-410 Exam. Our candidates walk into the testing room as confident as a Certification Administrator. So you can pass the exam without any question. <http://www.greatexam.com/70-410-exam-questions.html>