

[Braindump2go Free 70-663 Dumps PDF&VCE (11-20)

MICROSOFT NEWS: 70-663 Exam Questions has been Updated Today! Get Latest 70-663 VCE and 70-663 PDF Instantly!

Welcome to Download the Newest Braindump2go 70-663 VCE&70-663 PDF Dumps:

<http://www.braindump2go.com/70-663.html> (291 Q&As) 70-663 Exam Dumps Free Shared By Braindump2go For Instant Download Now! Download Latest 70-663 Exam Questions and pass 70-663 one time easily! Do you want to be a winner? Exam Code: 70-663 Exam Name: Pro: Designing and Deploying Messaging Solutions with Microsoft Exchange Server 2010 Certification Provider: Microsoft Corresponding Certifications: MCITP, MCITP: Enterprise Messaging Administrator on Exchange 2010 70-663 Dumps, 70-663 Dumps PDF, 70-663 Dumps VCE, 70-663 PDF, 70-663 VCE, 70-663 Study Guide, 70-663 Braindump, 70-663 Book, 70-663 Exam Questions, 70-663 Practice Test, 70-663 Practice Exam, 70-663 eBook, 70-663 Preparation

**Pro: Designing and Deploying
Microsoft Exchange Server 2010**



Product De
Exam Numbe

"Pro: Designing and Deploying Messaging Solutions with Microsoft Exchange Server 2010" is also known as 70-663 Exam preparation material. It contains 291 questions and answers.

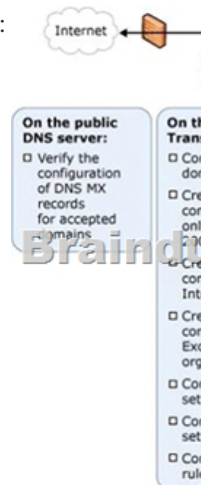
Free Demo

Braindump2go provides the latest exam dumps with high quality and usability.

PDF DEMO

CHECK OUT

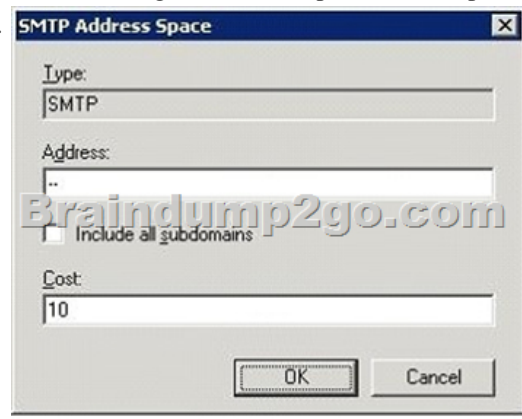
QUESTION 11 You have an Exchange Server 2003 organization. All e-mail messages sent to the organization from the Internet are delivered to an Exchange Server 2003 server. You plan to transition the delivery of e-mail from the Internet to an Exchange Server 2010 Hub Transport server. You need to create a transition plan for e-mail delivery from the Internet. What should you plan to modify? A. accepted domains B. address lists C. e-mail address policies D. Recover connectors
Answer: A
Explanation: An accepted domain is the SMTP namespace for which Exchange 2010 is allowed to receive email. By creating an accepted domain within the Exchange 2010 configuration, we are telling the Exchange 2010 environment that it is allowed to receive SMTP messages destined for users with that domain name in their email addresses. Configured through Hub Transport and Edge Transport:



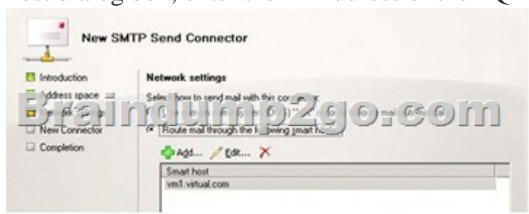
Internal Send Connector to Exchange 2003:



On the Address space page, click Add. Several SMTP domains can be added as separate entries, or, in the Add Address Space dialog box, the -- placeholder can be entered (Figure 9). The -- placeholder represents all authoritative and internal relay domains configured as Accepted Domains.



On the Network settings page (Figure 10), select Route mail through the following smart hosts, and then click Add. In the Add smart host dialog box, enter the IP Address or the FQDN of the Exchange 2003 bridgehead server that will receive the incoming messages.

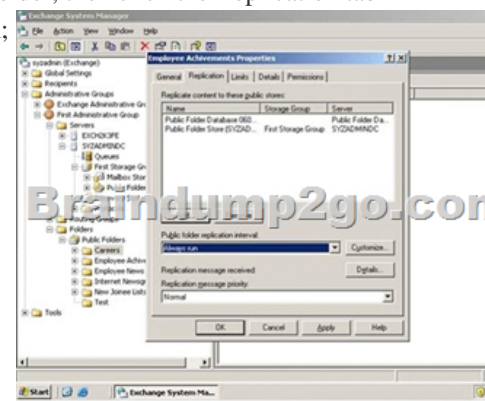


QUESTION 12 You have an Exchange Server 2010 organization. The organization has a Hub Transport server that has anti-spam agents installed. You plan to delegate the administration of the organization to a group named Security Administrators. You need to ensure that members of Security Administrators can manage anti-spam settings in the organization. The solution must minimize the amount of permissions assigned to Security Administrators. Which management role group should you assign? A. Hygiene Management B. Organization Management C. Records Management D. Server Management
Answer: A
Explanation: The Hygiene Management management role group is one of several built-in role groups that make up the Role Based Access Control (RBAC) permissions model in Microsoft Exchange Server 2010. Role groups are assigned one or more management roles that contain the permissions required to perform a given set of tasks. The members of a role group are granted access to the management roles assigned to the role group. For more information about role groups, see Understanding Management Role Groups. Users who are members of the Hygiene Management role group can configure the antivirus and anti-spam features of Exchange Server 2010. Third-party programs that integrate with Exchange 2010 can add service accounts to this role group to grant those programs access to the cmdlets required to retrieve and configure the Exchange configuration.

<http://technet.microsoft.com/en-us/library/dd776125.aspx> **QUESTION 13** You have an Exchange Server 2010 organization. The organization contains a Mailbox server named Server1. Server1 hosts two mailbox databases and one public folder database. You need to recommend a high availability solution for Server 1 that meets the following requirements:- Mailboxes and public folders must be available if a single Mailbox server fails- Deploy the minimum number of servers What should you recommend? A. Install failover clustering on both servers, and then configure cluster continuous replication. Replicate all public folders to Server2. B. Create and configure a database availability group (DAG). Add Server1 and Server2 to the DAG. Create database copies. Replicate all public folders to Server2. C. Create and configure a database availability group (DAG). Add Server1 and Server2 to the DAG. Deploy a new server named Server3. Create database copies. Configure Server3 as a dedicated public folder server. D. Install failover Clustering on both servers, and then configure a single copy cluster (SCC). Deploy a new server named Server3. Configure Server3 as a dedicated public folder server.
Answer: B **QUESTION 14** You have an Exchange Server 2010 organization. You deploy an Edge Transport server. You need to implement a messages hygiene solution that meets the following requirements:- Users must be able to receive e-mail from external recipients who have been added to their Safe Senders Lists- The Edge Transport server must block all e-mail sent to invalid addresses inside the organization. What should you do first? A. Enable sender filtering B. Create Send connectors C. Configure real time block lists (RBLs) D. Configure EdgeSync synchronization
Answer: D
Explanation: In Microsoft Exchange Server 2010, the Edge Transport server role is deployed in your organization's perimeter network. Designed to

minimize the attack surface, the Edge Transport server handles all Internet-facing mail flow, which provides SMTP relay and smart host services for the Exchange organization. Additional layers of message protection and security are provided by a series of agents that run on the Edge Transport server and act on messages as they're processed by the message transport components. These agents support the features that provide protection against viruses and spam and apply transport rules to control message flow. The computer that has the Edge Transport server role installed doesn't have access to Active Directory. All configuration and recipient information is stored in Active Directory Lightweight Directory Services (AD LDS). To perform recipient lookup tasks, the Edge Transport server requires data that resides in Active Directory. This data is synchronized to the Edge Transport server using EdgeSync. EdgeSync is a collection of processes that are run on a computer that has the Hub Transport server role installed to establish one-way replication of recipient and configuration information from Active Directory to the AD LDS instance on an Edge Transport server. The Microsoft Exchange EdgeSync service copies only the information that's required for the Edge Transport server to perform anti-spam configuration tasks and the information about the connector configuration that's required to enable end-to-end mail flow. The Microsoft Exchange EdgeSync service performs scheduled updates so that the information in AD LDS remains current. You can install more than one Edge Transport server in the perimeter network. Deploying more than one Edge Transport server provides redundancy and failover capabilities for your inbound message flow. You can load balance SMTP traffic to your organization between Edge Transport servers by defining more than one mail exchange (MX) resource record with the same priority in the Domain Name System (DNS) database for your mail domain. You can achieve consistency in configuration between multiple Edge Transport servers by using cloned configuration scripts. <http://technet.microsoft.com/en-us/library/bb124701.aspx>

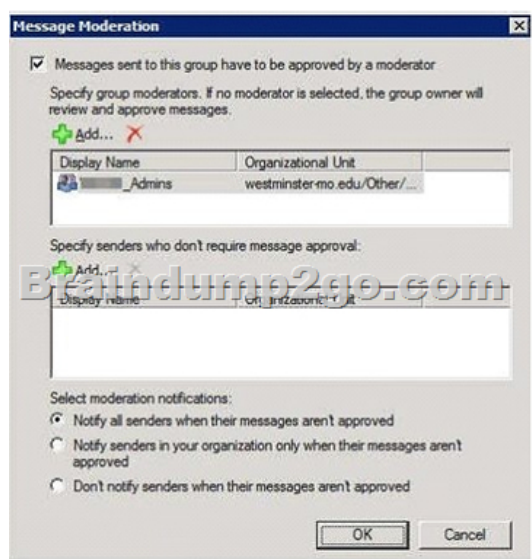
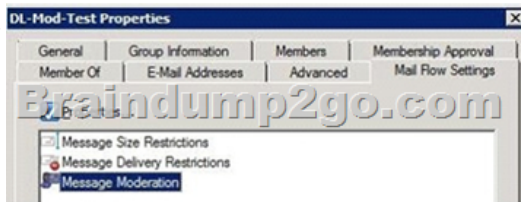
QUESTION 15 You have an Exchange Server 2003 organization. Users access public folders by using Microsoft Office Outlook 2003 and Outlook Web Access. You plan to transition the organization to Exchange Server 2010. You need to ensure that users can access public folders after their mailboxes have been moved to Exchange Server 2010. What should you do? A. Enable public folder referrals. B. Run the New Organization Relationship wizard. C. Create public folder replicas on an Exchange Server 2010 server. D. Run the Microsoft Exchange Inter-Organization Application tool from an Exchange Server 2003 server. **Answer: C**
Explanation: Step 1: Replicating Exchange 2003 PF's to Exchange 2010 To add the Exchange 2010 Public Folder database to the replica list on the Exchange 2003 Server, open the Exchange 2003 System Manager, then expand: Administrative Groups > First Administrative Group > Folders > Public Folders. Now open the property page of each public folder, then click the Replication tab and add the Exchange 2010 to the replica list as shown in the inner figure on the above diagram;



Step 2: Moving Exchange 2003 PF's to Exchange 2010 After you confirmed that all the PF have been replicated to the Exchange 2010, you can move all replicas from Exchange 2003 to Exchange 2010. To move all Exchange 2003 replicas to Exchange 2010, which will actually remove the Exchange 2003 replicas from the Exchange 2010 server: MoveAllReplicas.ps1 -Server "Exchange 2003 Server" -NewServer "Exchange 2010 Server" **QUESTION 16** You have an Exchange Server 2010 organization. You need to recommend an e-mail retention solution to meet the following requirements:- Ensure that users can manually control the expiration of messages in their inbox folders- Ensure that administrators can archive messages that are older than a specified number of days automatically What should you recommend? A. managed folders B. journal rules C. Personal Archives D. Retention policies **Answer: D** **QUESTION 17** You have an Exchange organization that consists of the servers shown in the following table. You plan to implement moderated transport for distribution groups in the organization. You need to recommend changes to the organization to support the planned implementation. What should you recommend?

Server	Role	Exchange Server Version	Site
Server1	Mailbox Client Access	Exchange Server 2007 Service Pack 2 (SP2)	Site1
Server2	Hub Transport	Exchange Server 2007 Service Pack 2 (SP2)	Site1
Server3	Hub Transport	Exchange Server 2007 Service Pack 2 (SP2)	Site1
Server4	Hub Transport	Exchange Server 2010	Site2

A. Upgrade Server 3 to Exchange Server 2010.B. Install Windows Server 2008 R2 global catalog servers.C. Replace all distribution groups with dynamic distribution groups.D. Use Server4 as the expansion server for all moderated distribution groups.
Answer: D
Explanation: Using the moderated transport feature in Microsoft Exchange Server 2010, you can require all e-mail messages sent to specific recipients be approved by moderators. Exchange 2010 Hub Transport servers will ensure that all messages sent to those recipients go through an approval process. Moderation must be done on a Exchange 2010 Hub Transport Server [as this is a new feature in 2010]. Before you make heavy use of moderated distribution lists, you should make sure that the message doesn't have to pass through any non-Exchange 2010 Hub Transport servers. Older Hub Transport servers will simply pass messages on to group members and ignore moderation options. You enable moderation features on an existing distribution group. Go to groups Properties, then Mail Flow Settings, then Message Moderation.

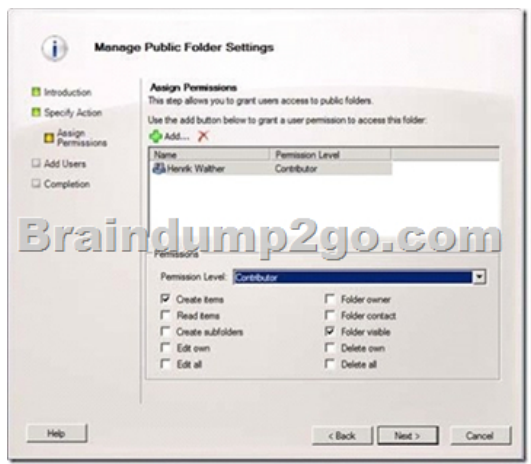
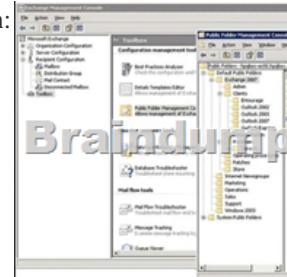


QUESTION 18 Your network contains two Exchange Server 2010 Edge Transport servers. The network also contains five Hub Transport servers in two Active Directory sites. All e-mail sent to the network is received by the Edge Transport servers. You plan to configure anti-spam filtering. You need to ensure that the anti-spam filtering configurations are applied to both Edge Transport servers. The solution must use a minimum amount of administrative effort. What should you do? A. Configure EdgeSync synchronization B. Implement Active Directory Federation Services (AD FS) C. Join both Edge Transport servers to an Active Directory domain and then create a forest trust for the internal forest D. Manually configure settings on one Edge Transport server and then export the settings to the other Edge Transport server
Answer: D
Explanation: You can use the provided Shell scripts to duplicate the configuration of a computer that has the Microsoft Exchange Server 2010 Edge Transport server role installed. This process is referred to as cloned configuration. Cloned configuration is the practice of deploying new Edge Transport servers based on the configuration information from a previously configured source server. The configuration information from the previously configured source server is copied and exported to an XML file, which is then imported to the target server. `ExportEdgeConfig.ps1` This script exports all user-configured settings and data from an Edge Transport server and stores that data in an XML file. `ImportEdgeConfig.ps1` During the validate configuration step, the `ImportEdgeConfig.ps1` script checks the XML file to see whether the server-specific export settings are valid for the target server. If settings have to be modified, the script writes the invalid settings to an answer file that you modify to specify the target server information that's used during the import configuration step. During the import configuration step, the script imports all user-configured settings and data that's stored in the intermediate XML file that was created by the `ExportEdgeConfig.ps1` script.
QUESTION 19 You have an Exchange Server 2010 organization. You plan to deploy a public folder access solution to meet the following requirements:- Users in the legal department must be able to send e-mail messages to public folders- Users in the legal department must not be able to read documents in the public folders by using Outlook Web App

(OWA) You need to recommend changes to public folder access that meet the company requirements. What should you recommend?

- A. mail-enabled public folders and Editor Permissions
B. mail-enabled public folders and Contributor permissions
C. OWA segmentation and Reviewer permissions
D. OWA segmentation and Send As permissions

Answer: B
Explanation:



Public folders are only required in Exchange 2010 if you:

1. Have the requirement to support Outlook 2003 clients, which cannot use web-based distribution to access OAB and free/busy data. Outlook 2007 clients are also able to use public folders in this way but Outlook 2010 clients only use web-based distribution to access OAB and free/busy data.
2. Have applications that are based on public folders. Ten years ago, these applications were reasonably popular but recently they have become a fast-disappearing category as companies have migrated applications to more modern and functional platforms. SharePoint and InfoPath forms are an option that is often considered for the kind of forms-based applications that were deployed on top of public folders.

QUESTION 20

You have an Exchange Server 2010 organization. You plan to deploy a monitoring solution for Exchange Server 2010. You need to recommend a solution to track the usage of ActiveSync clients and to analyze usage trends. What should you include in the solution?

A. Internet Information Server log files
B. Exchange Server Mail Flow Troubleshooter
C. Exchange Server Performance Troubleshooter
D. Microsoft System Control Configuration Manager

Answer: A

Braindump2go New Updated 70-663 Exam Dumps are Complete Microsoft 70-663 Course Coverage! 100% Real Questions and Correct Answers Guaranteed! Updated 70-663 Preparation Material with Questions and Answers PDF Instant Download:

Pro: Designing and Deploying Messaging Solutions with Microsoft Exchange Server 2010: 70-663



Questions and Answers : 291
Q&As

Updated: Jan 22, 2016

~~\$429.99~~ **\$99.99**

PDF DEMO

CHECK OUT

Product Description Exam Number/Code: 70-663

Exam Number/Code: 70-663

"Pro: Designing and Deploying Messaging Solutions with Microsoft Exchange Server 2010" also known as 70-663 exam, is a Microsoft Certification. With the complete questions and answers, Braindump2go has assembled to take you through the 70-663 Exam preparation. In the 70-663 exam resources, you will cover all the topics in Microsoft MCITP helping to ready you for your successful Microsoft Certification.

Free Demo Download

Braindump2go offers free demo for 70-663 exam (Pro: Designing and Deploying Messaging Solutions with Microsoft Exchange Server 2010). You can check out the quality and usability of our practice exams before you decide to buy it.

☒ **Printable PDF** ☒ **Premium VCE + VCE Simulator**

FREE DOWNLOAD: NEW UPDATED 70-663 PDF Dumps & 70-663 VCE Dumps from Braindump2go:
<http://www.braindump2go.com/70-663.html> (291 Q&As)