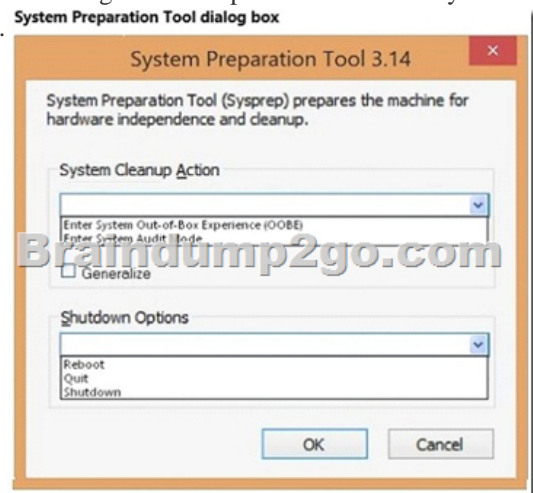
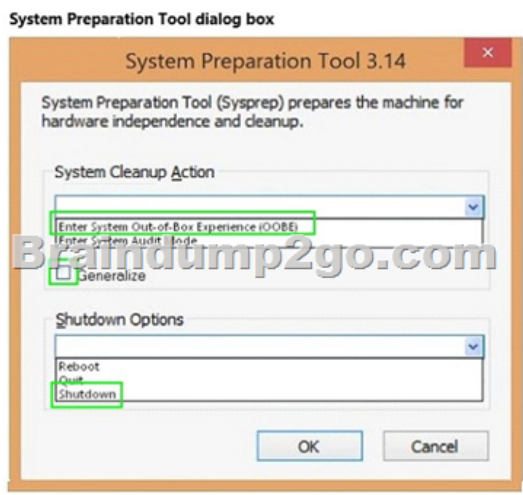


## [2016 -Mar.- NEWBraindump2go Latest 70-534 Study Guide Free Version Download

2016 NEW 70-534 Exam Questions RELEASED Today! Exam Code: 70-534 Exam Name: Architecting Microsoft Azure Solutions  
Certification Provider: Microsoft Corresponding Certification: Microsoft Specialist: Microsoft Azure 2016 NEW 70-534 Study Guides: 1. Design Microsoft Azure infrastructure and networking 2. Secure resources 3. Design an application storage and data access strategy 4. Design an advanced application 5. Design Azure Web Apps 6. Design a management, monitoring, and business continuity strategy  
**QUESTION 131** Hotspot Question You have an existing server that runs Windows Server. You plan to create a base image of this server. You will use this base image to prepare several virtual servers for future use. After the base image is prepared, you will capture it by using the Azure management portal. You must use the System Preparation Tool (Sysprep) to prepare the server so that the base image can be captured. You need to prepare the server so that the base image can be captured. What should you do? To answer, configure the appropriate options in the dialog box in the answer area.



Answer:



**QUESTION 132** Drag and Drop Question Your company network includes a single forest with multiple domains. You plan to migrate from On-Premises Exchange to Exchange Online. You want to provision the On-Premises Windows Active Directory (AD) and Azure Active Directory (Azure AD) service accounts. You need to set the required permissions for the Azure AD service account. Which settings should you use? To answer, drag the appropriate permission to the service account. Each permission may be used once, more than once, or not at all. You may need to drag the split bar between panes or scroll to view content.

Permissions	Service Account
Enterprise Admin	Azure AD
Domain Admin	
Global Admin	Permission
Password Admin	Permission
IIS Admin	

Answer:

Permissions	Service Account
Enterprise Admin	Azure AD
Domain Admin	
Global Admin	Enterprise Admin
Password Admin	Global Admin
IIS Admin	

QUESTION 133 You manage a cloud service that utilizes an Azure Service Bus queue. You need to ensure that messages that are never consumed are retained. What should you do? A. Check the MOVE TO THE DEAD-LETTER SUBQUEUE option for Expired Messages in the Azure Portal. B. From the Azure Management Portal, create a new queue and name it Dead-Letter.C. Execute the Set-AzureServiceBus PowerShell cmdlet. D. Execute the New-AzureSchedulerStorageQueueJob PowerShell cmdlet. Answer: A Explanation: The EnableDeadLetteringOnMessageExpiration property allows to enable/disable the dead-lettering on message expiration. QUESTION 134 Drag and Drop Question You manage an Azure Web Site named salessite1. You notice some performance issues with salessite1. You create a new database for salessite1. You need to update salessite1 with the following changes, in the order shown: 1. Display the list of current connection strings. 2. Create a new connection string named conn1 with a value of: Server=tcp:sample1.database.windows.net,1433;Database=NewDB;User ID=User@sample1;Password=Password1;Trusted\_Connection=False;Encrypt=True;Connection Timeout=30;. 3. Download the application logs for analysis. Which three xplat-cli commands should you perform in sequence? To answer, move the appropriate commands from the list of commands to the answer area and arrange them in the correct order.

Command	Answer Area
site connectionstring show "conn1"	
"Server=tcp:sample1.database.windows.net,1433;Database=NewDB;User ID=User@sample1;Password=Password1;Trusted_Connection=False;Encrypt=True;Connection Timeout=30;" "SQLAzure" salessite1	
site log download salessite1	
go tail salessite1	
site connectionstring show salessite1	
site connectionstring add "conn1"	
"Server=tcp:sample1.database.windows.net,1433;Database=NewDB;User ID=User@sample1;Password=Password1;Trusted_Connection=False;Encrypt=True;Connection Timeout=30;" "SQLAzure" salessite1	
site connectionstring list salessite1	

Answer:

Command	Answer Area
site connectionstring show "conn1" "Server=tcp:sample1.database.windows.net,1433;Database=NewDB;User ID=User@sample1;Password=Password1;Trusted_Connection=False;Encrypt=True;Connection Timeout=30;" "SQLAzure" salesite1	site connectionstring list salesite1
site log download salesite1	
site tail salesite1	
site connectionstring show salesite1	
site connectionstring add "conn1" "Server=tcp:sample1.database.windows.net,1433;Database=NewDB;User ID=User@sample1;Password=Password1;Trusted_Connection=False;Encrypt=True;Connection Timeout=30;" "SQLAzure" salesite1	site log download salesite1
site connectionstring list salesite1	

QUESTION 135Drag and Drop QuestionYou publish a multi-tenant application named MyApp to Azure Active Directory (Azure AD). You need to ensure that only directory administrators from the other organizations can access MyApp's web API. How should you configure MyApp's manifest JSON file? To answer, drag the appropriate PowerShell command to the correct location in the application's manifest JSON file. Each value may be used once, more than once, or not at all. You may need to drag the split bar between panes or scroll to view content.

PowerShell command	Manifest JSON file
user_impersonation	service on behalf of the signed-in user", "directAccessGrantTypes": [], "displayName": "Have full access to the Todo list service", "impersonationAccessGrantTypes": [ { "impersonated": "User", "impersonator": "Application" } ], "permissionId": "b60ee3c9-c4bd-472a-ac80-961cd1534e40", "resourceScopeType": "PowerShell command", "userConsentDescription": "Allow the application full access to the todo service on your behalf", "userConsentDisplayName": "Have full access to the todo service" }
application_impersonation	
false	
personal	
Global	

Answer:

PowerShell command	Manifest JSON file
user_impersonation	service on behalf of the signed-in user", "directAccessGrantTypes": [], "displayName": "Have full access to the Todo list service", "impersonationAccessGrantTypes": [ { "impersonated": "User", "impersonator": "Application" } ], "permissionId": "b60ee3c9-c4bd-472a-ac80-961cd1534e40", "resourceScopeType": "Global", "userConsentDescription": "Allow the application full access to the todo service on your behalf", "userConsentDisplayName": "Have full access to the todo service" }
application_impersonation	
false	
personal	
Global	

QUESTION 136Drag and Drop QuestionYou plan to deploy a cloud service named contosoapp. The service includes a web role named contosowebrole. The web role has an endpoint named restrictedEndpoint. You need to allow access to restricted Endpoint only from your office machine using the IP address 145.34.67.82. Which values should you use within the service configuration file? To answer, drag the appropriate value to the correct location in the service configuration file. Each value may be used once, more than once, or not at all. You may need to drag the split bar between panes or scroll to view content.

Values	Service Configuration File
permit	<NetworkConfiguration> <AccessControls> <AccessControl name="test"> <Rule action="Value" value="145.34.67.82/32"> remoteSubnet="Value" order="2" </Rule> </AccessControl> </AccessControls> <EndpointAcl> <EndpointAcl role="contosowebrole" accessControl="test" endpoint="restrictedEndpoint"/> </EndpointAcl> </NetworkConfiguration>
deny	
145.34.67.82/32	
145.34.67.82/1	
0.0.0.0/32	

Answer:

Values	Service Configuration File
permit	<NetworkConfiguration> <AccessControls> <AccessControl name="test"> <Rule action="deny" value="145.34.67.82/32"> remoteSubnet="0.0.0.0/0" order="2" </Rule> </AccessControl> </AccessControls> <EndpointAcl> <EndpointAcl role="contosowebrole" accessControl="test" endpoint="restrictedEndpoint"/> </EndpointAcl> </NetworkConfiguration>
deny	
145.34.67.82/32	
145.34.67.82/1	
0.0.0.0/32	

QUESTION 137Drag and Drop QuestionYou administer two virtual machines (VMs) that are deployed to a cloud service. The VMs are part of a virtual network. The cloud service monitor and virtual network configuration are configured as shown in the exhibits. (Click the Exhibits button.)



You need to create an internal load balancer named fabLoadBalancer that has a static IP address of 172.16.0.100. Which value should you use in each parameter of the Power Shell command? To answer, drag the appropriate value to the correct location in the Power Shell command. Each value may be used once, more than once, or not at all. You may need to drag the split bar between panes or scroll to view content.

Values	PowerShell command parameter
fabSvc1	Add-AzureInternalLoadBalancer
fabSvc2	-InternalLoadBalancerName fabLoadBalancer
fabSvc1	-ServiceName
fabSvc2	-SubnetName
fabrikamVNet	-StaticWebVMAddr 172.16.0.100
Subnet-1	
Subnet-2	

Answer:

Values	PowerShell command parameter
fabSvc1	Add-AzureInternalLoadBalancer
fabSvc2	-InternalLoadBalancerName fabLoadBalancer
fabSvc1	-ServiceName
fabSvc2	-SubnetName
fabrikamVNet	-StaticWebVMAddr 172.16.0.100
Subnet-1	
Subnet-2	

**QUESTION 138** You manage a set of virtual machines (VMs) deployed to the cloud service named fabrikamVM. You configure auto scaling according to the following parameters:- With an instance range of two to six instances- To maintain CPU usage between 70 and 80 percent- To scale up one instance at a time- With a scale up wait time of 30 minutes- To scale down one instance at a time - With a scale down wait time of 30 minutes You discover the following usage pattern of a specific application: The application peaks very quickly, and the peak lasts for several hours. CPU usage stays above 90 percent for the first 1 to 1.5 hours after usage increases. After 1.5 hours, the CPU usage falls to about 75 percent until application usage begins to decline. You need to modify the auto scaling configuration to scale up faster when usage peaks. What are two possible ways to achieve this goal? Each correct answer presents a complete solution. A. Decrease the scale down wait time. B. Decrease the scale up wait time. C. Increase the number of scale up instances. D. Increase the scale up wait time. E. Increase the maximum number of instances. Answer: BC

**QUESTION 139** You manage a cloud service that has a web role named fabWeb. You create a virtual network named fabVNet that has two subnets defined as Web and Apps. You need to be able to deploy fabWeb into the Web subnet. What should you do? A. Modify the service definition (csdef) for the cloud service. B. Run the Set-AzureSubnet PowerShell cmdlet. C. Run the Set-AzureVNetConfig PowerShell cmdlet. D. Modify the network configuration file. E. Modify the service configuration (cscfg) for the fabWeb web role. Answer: A

**Explanation:** Azure Service Definition Schema (.csdef File) The service definition file defines the service model for an application. The file contains the definitions for the roles that are available to a cloud service, specifies the service endpoints, and establishes configuration settings for the service.

**QUESTION 140** You administer an Azure Active Directory (Azure AD) tenant where Box is configured for:- Application Access- Password Single Sign-on An employee moves to an organizational unit that does not require access to Box through the Access Panel. You need to remove only Box from the list of applications only for this user. What should you do? A. Delete the user from the Azure AD tenant. B. Delete the Box Application definition from the Azure AD tenant. C. From the Management Portal, remove the user's assignment to the application. D. Disable the user's account in Windows AD. Answer: C

**Explanation:** Note: Use Azure AD to manage user access, provision user accounts, and enable single sign-on with Box. Requires an existing Box subscription.

**QUESTION 141** Drag and Drop Question Your team uses a proprietary source control product. You use FTP to manually deploy an Azure website. You must move your source code from the proprietary source control product to a secure on-premises Git versioning system. Instead of deploying the website by using FTP, the website must automatically deploy to Azure each time developers check-in source files. You need to implement the new deployment strategy. Which three actions should you perform in sequence? To answer, move the appropriate actions from the list of actions to the answer area and arrange them in the correct order.

Actions	Answer Area
In the Azure management portal, configure websites to support deployment from the local Git repository.	
In the Azure management portal, configure websites to support deployment from external repository sources.	
Commit the website to Azure.	
Create the website and add it to the local Git repository.	

Answer:

Actions	Answer Area
In the Azure management portal, configure websites to support deployment from the local Git repository.	Create the website and add it to the local Git repository.
In the Azure management portal, configure websites to support deployment from external repository sources.	In the Azure management portal, configure websites to support deployment from the local Git repository.
Commit the website to Azure.	Commit the website to Azure.
Create the website and add it to the local Git repository.	

**QUESTION 142** You administer an Azure Storage account named contoso storage. The account has queue containers with logging enabled. You need to view all log files generated during the month of July 2014. Which URL should you use to access the list? A. [http://contosostorage.queue.core.windows.net/\\$logs?restype=container&comp=list&prefix=queue/2014/07B](http://contosostorage.queue.core.windows.net/$logs?restype=container&comp=list&prefix=queue/2014/07B). B. [http://contosostorage.queue.core.windows.net/\\$files?restype=container&comp=list&prefix=queue/2014/07C](http://contosostorage.queue.core.windows.net/$files?restype=container&comp=list&prefix=queue/2014/07C). C. [http://contosostorage.blob.core.windows.net/\\$files?restype=container&comp=list&prefix=queue/2014/07D](http://contosostorage.blob.core.windows.net/$files?restype=container&comp=list&prefix=queue/2014/07D). D. [http://contosostorage.blob.core.windows.net/\\$logs?restype=container&comp=list&prefix=queue/2014/07E](http://contosostorage.blob.core.windows.net/$logs?restype=container&comp=list&prefix=queue/2014/07E). Answer: D

**Explanation:** All logs are stored in block blobs in a container named \$logs, which is automatically created when Storage Analytics is enabled for a storage account. The \$logs container is located in the blob namespace of the storage account, for example: [http://<accountname>.blob.core.windows.net/\\$logs](http://<accountname>.blob.core.windows.net/$logs). This container cannot be deleted once Storage Analytics has been enabled, though its contents can be deleted. Note: Each log will be written in the following format: <service-name>/YYYY/MM/DD/hhmm/<counter>.log

<http://msdn.microsoft.com/library/azure/hh343262.aspx> 2016 NEW 70-534 Dumps&70-534 PDF 142Q Full

Version:<http://www.braindump2go.com/70-534.html>

Compared Before Buying Microsoft 70-534 PDF & VCE!		
Pass4sure	Braindump2go	Test King
	100% Pass OR Money Back	
Not In Stock	142 Q&As – Real Questions	50 Q&As - Practice
/	\$99.99	\$124.99
/	Coupon Code: BDNT2014	No Discount