

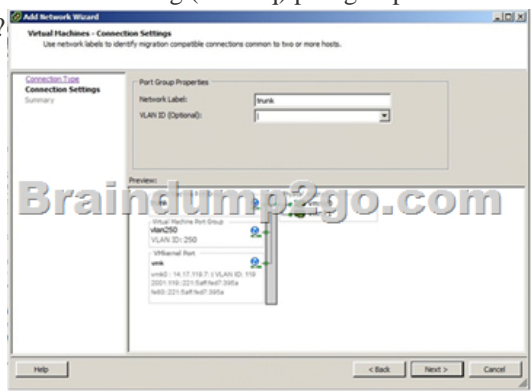
[2016-Dec.-NewReal Cisco 300-460 PDF and VCE Free Download from Braindump2go[11-20

2016/12 New Cisco 300-460: Implementing and Troubleshooting the Cisco Cloud Infrastructure Exam Questions Updated Today! Free Instant Download 300-460 Exam Dumps (PDF & VCE) 70Q&As from Braindump2go.com Today! [100% Real Exam Questions! 100% Exam Pass Guaranteed!](#) 1.|2016/12 New Cisco 300-460 Exam Dumps (PDF & VCE) 70Q&As Download: <http://www.braindump2go.com/300-460.html> 2.|2016/12 New Cisco 300-460 Exam Questions & Answers: <https://1drv.ms/f/s!AvI7wzKf6QBjgSI7k0t6G-AtZpfX>

QUESTION 11 Which three statements about context workflow mapping in Cisco UCS Director are true? (Choose three.)
A. You can execute a workflow that contains a set of tasks from within a context of a component.
B. Workflows cannot be mapped in the form of an action, nor can they be executed in the context of a component.
C. You have to browse for a required workflow in the workflow list to execute it.
D. Context workflow mapping consists of two stages: Stage 1 - Create a context mapper task and add it to the workflow that must be mapped as an action. Stage 2 - Add the workflow to the content mapper list by giving in an action label.
E. Context workflow mapping consists of two stages: Stage 1 - Create the workflow to the content mapper list by giving in an action label. Stage 2 - Add a context mapper task to the workflow that must be mapped as an action.
F. You can map a workflow in the form of an action and execute it in the context of the component.
Workflows cannot be executed at the component level.
Answer: ACDE
Explanation:

[http://www.cisco.com/c/en/us/td/docs/unified_computing/ucs/ucs-director/orchestration-guide/5-](http://www.cisco.com/c/en/us/td/docs/unified_computing/ucs/ucs-director/orchestration-guide/5-0/b_UCS_Director_Orchestration_Guide_5_0/b_UCS_Director_Orchestration_Guide_5_0_chapter_0101.html#concept_3BA2EDA)

[0/b_UCS_Director_Orchestration_Guide_5_0/b_UCS_Director_Orchestration_Guide_5_0_chapter_0101.html#concept_3BA2EDA](http://www.cisco.com/c/en/us/td/docs/unified_computing/ucs/ucs-director/orchestration-guide/5-0/b_UCS_Director_Orchestration_Guide_5_0_chapter_0101.html#concept_3BA2EDA)
DF4724218802E5CE3184B27A0 QUESTION 12 In Cisco UCSM, which two options describe the purpose of a service profile template? (Choose two.)
A. With a service profile template, you can quickly create several service profiles with the same basic parameters, such as the number of vNICs and vHBAs, and with identify information drawn from the same pools.
B. A service profile template parameterizes the UUIDs that differentiate one instance of an otherwise identical server from another. Templates can be categorized into two types: initial and updating.
C. When using an initial service profile template, changes to the initial template automatically propagate to the bound service profiles.
D. Service profiles created from an updating service profile template do not inherit all the properties of the template and remain connected to the template. Any changes to the template must be propagated manually to the service profiles that are created from the template.
Answer: AB
QUESTION 13 Refer to the exhibit. You have been asked to create a trunking (802.1q) port group on a VMware vSwitch. Which number must be assigned as the VLAN ID to trunk all VLANs?



A. 4095
B. 1C. 1-4095
D. 0
Answer: C
QUESTION 14 During which process are Cisco UCS UUID, MAC, and WWPN identifiers allocated from the pool?
A. service profile instantiation
B. server boot time
C. service profile assignment to a server
D. service profile template creation
Answer: C
QUESTION 15 Which port-channel type is the best when deploying a Cisco Nexus 1000V with Cisco UCS B-Series Blades?
A. channel-group mode on sub-group cdp
B. channel-group auto mode on mac-pinning
C. channel-group auto mode active
D. channel-group mode on mac-pinning
Answer: B
Explanation:

http://www.cisco.com/c/en/us/products/collateral/switches/nexus-1000v-switch-vmware-vsphere/white_paper_c11-558242.html

QUESTION 16 Which two statements about Fibre Channel zoning in Cisco UCS are true? (Choose two.)
A. Zoning is configured on a per-VSAN basis.
B. Cisco UCS does not support zoning.
C. Zoning is configured on a per fabric basis.
D. Zoning can be enabled at the fabric level in switch mode.
E. You cannot enable zoning at the fabric interconnect level.
Answer: CD
QUESTION 17 An administrator is installing a hypervisor on a Cisco USB B-Series Blade Server. In which three locations can the OS image be installed in Cisco UCSM? (Choose three.)
A. local disk
B. CD-ROM
C. PXED.
D. LAN boot
E. SANF.
F. USB
Answer: ACE

Explanation:

http://www.cisco.com/c/en/us/td/docs/unified_computing/ucs/sw/gui/config/guide/1-0-2/b_GUI_Config_Guide/GUI_Config_Guide_chapter25.pdf

QUESTION 18 Which is the step to associate an application profile EPG to a VMM domain? A. The APIC pushes the EPGs as virtual switches to the VM controller. B. The VMM administrator creates the port groups in the Tenant window then assigns the EPGs to CPPAs. C. The APIC pushes the EPGs as port groups in the VM controller. D. The policy administrator assigns the EPG to physical endpoints in the VMM. Answer: C
Explanation: Provisioning of EPGs in VMM Domain--Associates application profile EPGs to VMM domains as follows: The APIC pushes these EPGs as port groups in the VM controller. The compute administrator then places vNICs into these port groups. An EPG can span multiple VMM domains, and a VMM domain can contain multiple EPGs. QUESTION 19 A Cisco UCS Director administrator is attempting to view log details for a service request. Which option lists the steps that accomplish this task? A. On the menu bar, choose Organizations > My Approvals Click the Service Requests tab. Choose the service request. Click View Details, and choose the Log tab. B. On the menu bar, choose Organizations > Service Requests From the left panel, choose a user group. Click the Service Request tab. Choose the service request. Click View Details, and choose the Log tab. C. On the menu bar, choose Organizations > My Approvals Click the Service Requests tab. Choose the service request. Click View Details, and choose the Input/Output tab. D. On the menu bar, choose Organizations > Virtual Resources From the left panel, choose a user group. Click the Service Request tab. Choose a service request. Click View Details, and choose the Input/Output tab. Answer: B
Explanation:

http://www.cisco.com/c/en/us/td/docs/unified_computing/ucs/ucs-director/troubleshooting-guide/b_UCS_Director_Troubleshooting_guide/b_UCS_Director_Troubleshooting_guide_chapter_01011.html#task_B7A72B55419B455D9C1B7A93CF40633A

QUESTION 20 A Cisco UCSM administrator is tasked with modifying the boot order in a service profile. Which option lists the steps required to accomplish this task? A. In the Navigation pane, click the Servers tab. On the Servers tab, expand Servers > Service Profiles. Click the service profile for which you want to change boot order. Click Boot Order Wizard to change the existing boot policy. B. In the Navigation pane, click the Servers tab. On the Servers tab, expand Servers > Service Profiles. Click the service profile for which you want to change boot order. Click Boot Security. Click Modify Boot Policy to change the existing policy. C. In the Navigation pane, click the Servers tab. On the Servers tab, expand Servers > Service Profiles. Click the service profile for which you want to change boot order. Click Modify Boot Policy to change the existing boot policy. D. In the Navigation pane, click the Servers tab. On the Servers tab, expand Servers > Service Profiles. Click the service profile for which you want to change boot order. Click Boot Order and the Modify Boot Policy wizard displays. Change the existing boot policy. Answer: D !!!RECOMMEND!!! 1. [Braindump2go|2016/12 New Cisco 300-460 Exam Dumps \(PDF & VCE\) 70Q&As Download:http://www.braindump2go.com/300-460.html](http://www.braindump2go.com/300-460.html) 2. [Braindump2go|2016/12 New Cisco 300-460 Exam Questions & Answers: YouTube Video: \[YouTube.com/watch?v=AqbEzyjH-Xc\]\(https://www.youtube.com/watch?v=AqbEzyjH-Xc\)](http://www.braindump2go.com/300-460.html)